

ARCHITECTURAL DRAWING

REMODELING OF SERVICE CENTER BUILDINGS

CHANGZAMTOK INDUSTRIAL ESTATE



Designed By:
National Housing
Development Corporation Ltd.
Thimphu

For:
Ministry of Economic Affairs,
Thimphu



དཔལ་ལྷན་འགན་ཁུར་བའི་ བོད་སྐད་སོང་འཕེལ་འགོ་དཔོན་ཆེན་མོ།

C ONSTRUCTION DEVELOPMENT BOARD
CERTIFICATION



CDB Registration Number :	BA-125(P)
Initial Registration Date :	21-08-2012
Registration Expiry Date :	08-07-2028
Revalidation Date :	null

ISSUED ONLY FOR THE RENOVATION OF THREE STOREY BUILDING AT INDUSTRIAL ESTATE, CHANGZAMTOK.

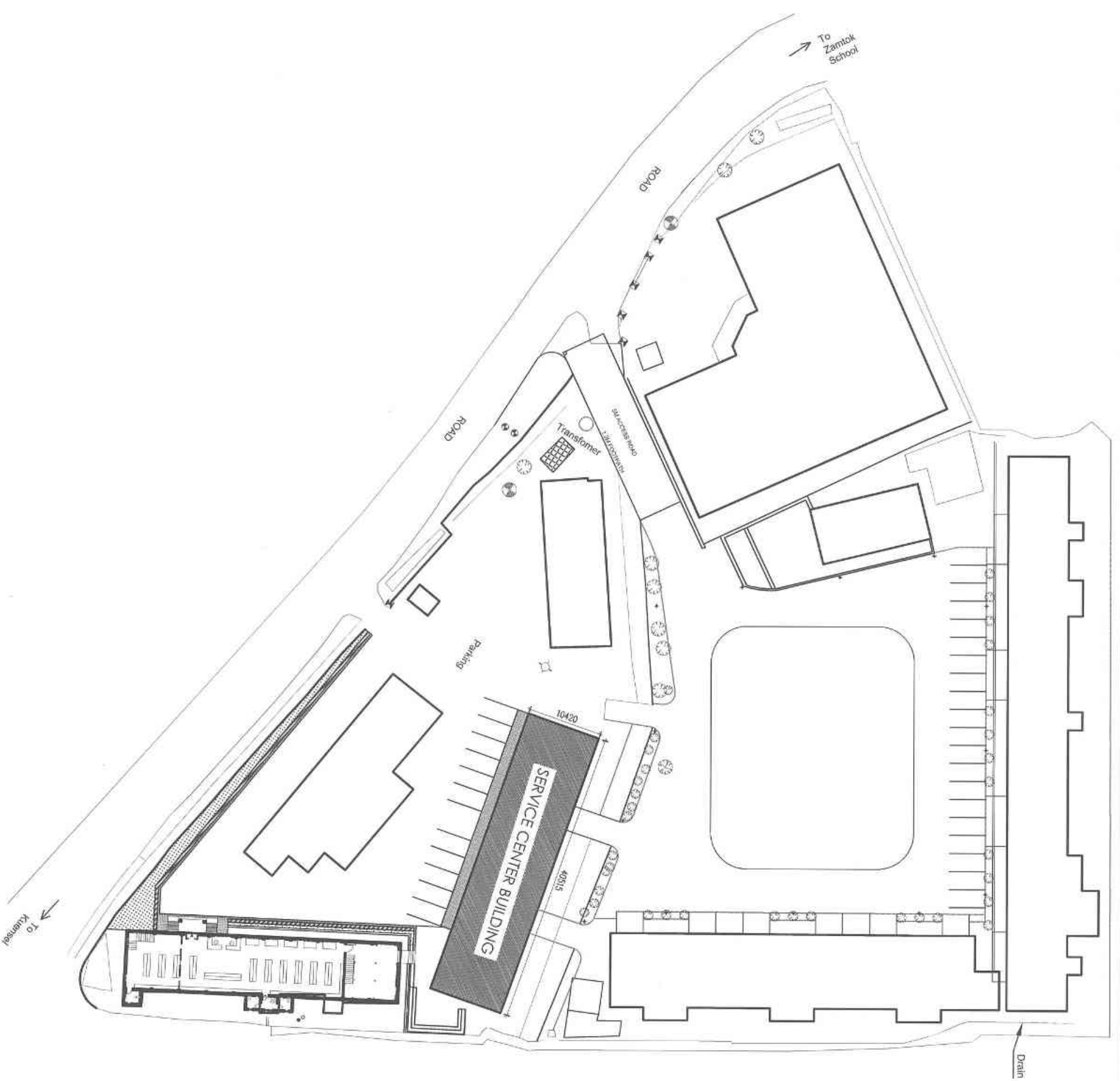
MINISTRY OF ECONOMIC AFFAIRS.

This is to certify that **Mingma Tsang** bearing CDB No. **BA-125(P)** is registered as an **ARCHITECT** with the Construction Development Board.


(Director)
Construction Development Board



Tel. No: +975-2-326035/34 Fax No: +975-2-321989 : Post Box # 1349
E-mail: registration@cdb.gov.bt, webmaster@cdb.gov.bt
Web address : www.cdb.gov.bt

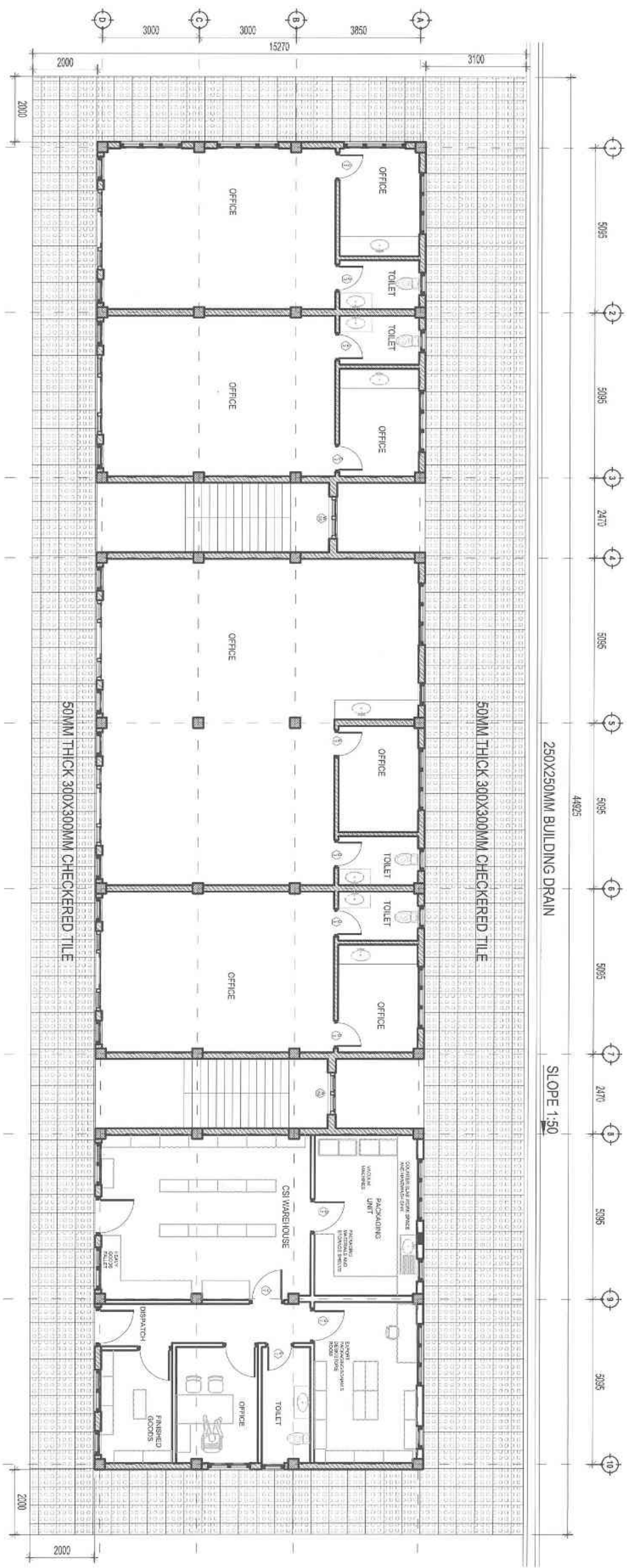


LEGEND

	BRICK WALL
	RCC
	STONE
	PCC
	EARTH
	TIMBER

PROJECT: SERVICE CENTER REMODELING	
SCALE: 1:500	DRAWING TITLE: SITE PLAN
DATE: MARCH-2022	DWG. NO. AR-001
ARCHITECT: Poshupati Diyali	GM(DPS):
CEO(NHDCU):	
NOTES:	
REVISION:	DATE:
REMARKS:	
<p>National Housing Development Corporation Ltd. Design & Planning Services, PO Box 1439 Thimphu Tel # (248) 0075-2, 323147 / 332724 / 332735, Fax: 331703 Website: www.nhdc.lk</p>	

- NOTES:**
1. All dimensions are in millimeters
 2. Do not measure from the drawing.
 3. Report any discrepancies to the Architect.
 4. Contractors or site engineers to verify all dimensions on drawings and on site before commencing any work.



LEGEND

	BRICK WALL
	RCC
	STONE
	PCC
	EARTH
	TIMBER

PROJECT: SERVICE CENTER REMODELING

SCALE:	1:50	DRAWING TITLE:	BUILDING AND PLINTH LAYOUT
DATE:	MARCH-2022	DWG. NO.:	AR-002

ARCHITECT

 Poshupati Dyal

GM/DPS

CEO/INDCL

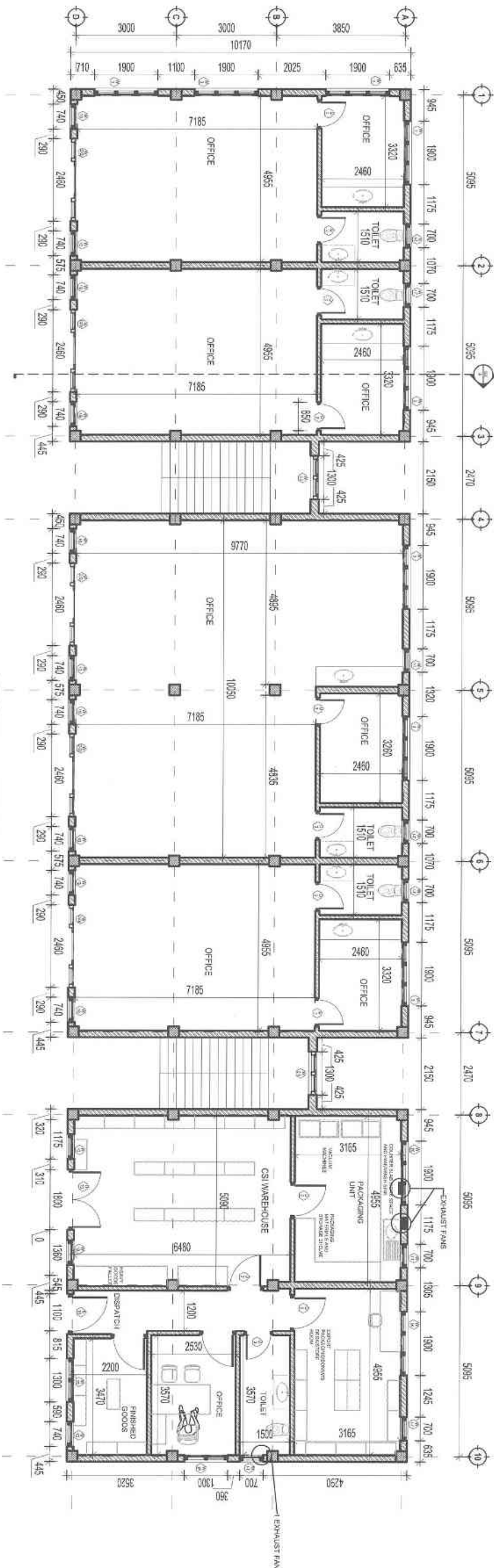


NOTES:

- All dimensions are in millimeters.
- Do not measure from the drawing.
- Report any discrepancies to the architect.
- Contractors or site engineers to verify all dimensions on drawings and on site before commencing any work.

REVISION:	DATE:	REMARKS:

National Housing Development Corporation Ltd.
 Design & Planning Services,
 PO Box 1439
 Thimphu
 Tel: 0975-2-32147/33274/33275
 Fax: 3312031 Website: www.nhdc.la



GROUND FLOOR PLAN

LEGEND

	BRICK WALL
	RCC
	STONE
	PCC
	EARTH
	TIMBER

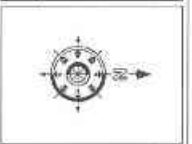
PROJECT: SERVICE CENTER REMODELING

SCALE:	1:50	DRAWING TITLE:	GROUND FLOOR PLAN
DATE:	MARCH-2022	DWG. NO.:	AR-003

ARCHITECT
Pashupati Dyoil

GM/DPS

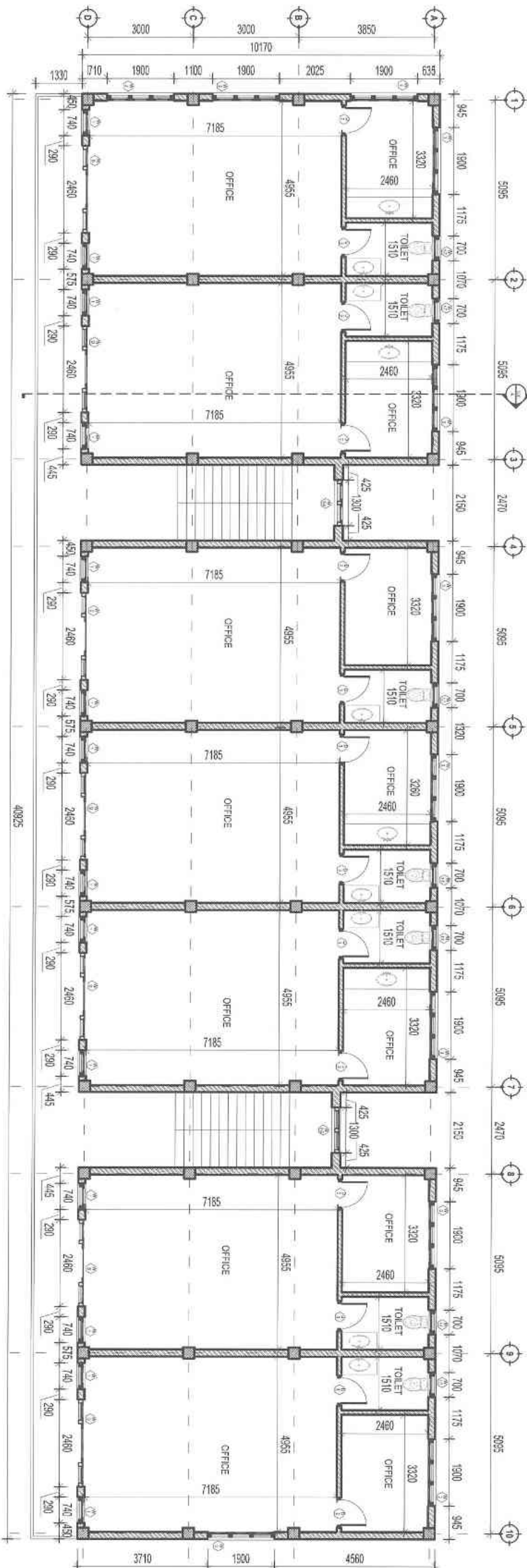
CEO (NHDCU)



- NOTES:**
- All dimensions are in millimeters
 - Do not measure from the drawing.
 - Report any discrepancies to the Architect.
 - Contractors or site engineers to verify all dimensions on drawings and on site before commencing any work.

REVISION:	DATE:	REMARKS:

National Housing Development Corporation Ltd.
Design & Planning Services.
PO Box 1439
Thimphu
Tel # (BAK) 00975 2 32147/33224/33279.
Fax: 331703 Website: www.nhdcltd



FIRST FLOOR PLAN

- LEGEND**
- BRICK WALL
 - RCC
 - STONE
 - PCC
 - EARTH
 - TIMBER

PROJECT: SERVICE CENTER REMODELING

SCALE: 1:50
 DATE: MARCH-2022

DRAWING TITLE: FIRST FLOOR PLAN
 DWG. NO. AR-004

ARCHITECT
 Poshupati Divoil

G.M.(DPS)

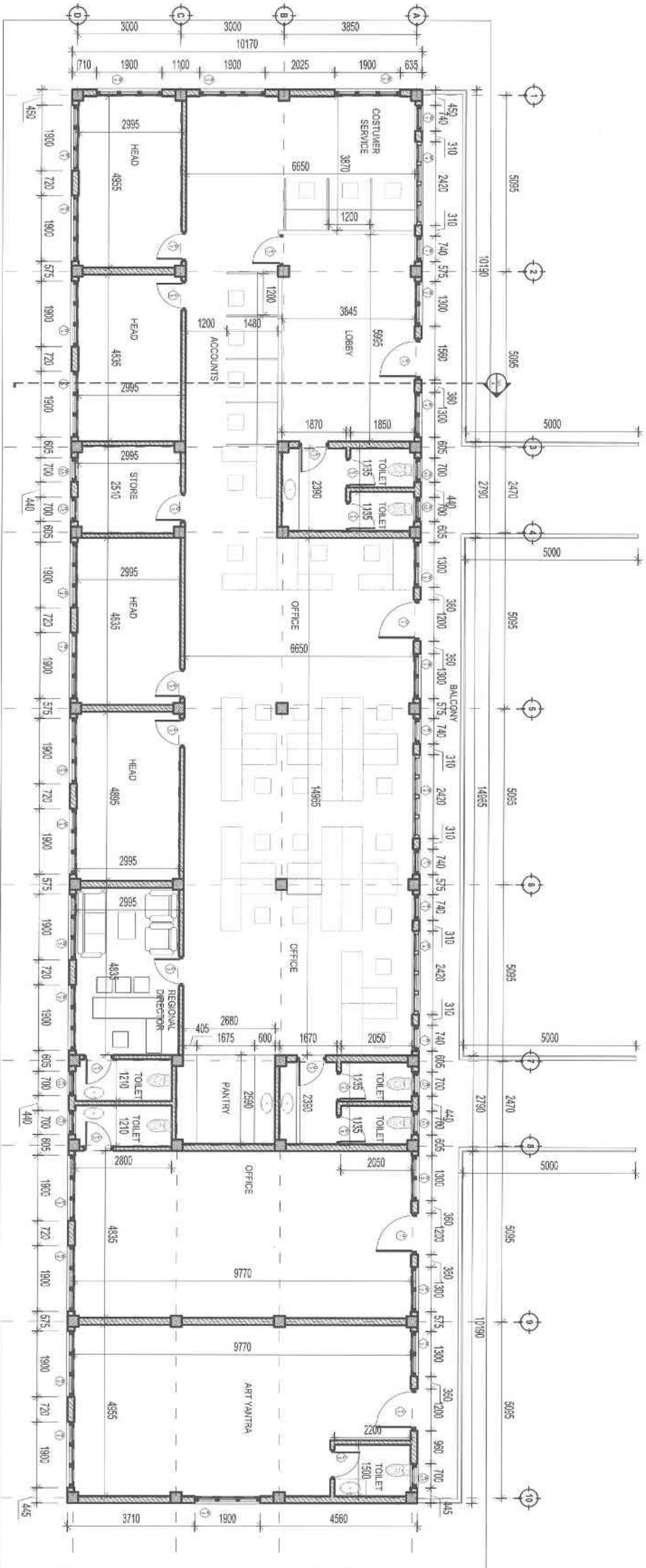
CEO(NHDCU)



- NOTES:**
1. All dimensions are in millimeters.
 2. Do not measure from the drawing.
 3. Report any discrepancies to the Architect.
 4. Contractors or site engineers to verify all dimensions on drawings and on site before commencing dry work.

REVISION:	DATE:	REMARKS:

National Housing Development Corporation Ltd.
 Design & Planning Services,
 PO Box 1439
 Thimphu
 Tel # (9753) 2-3231/7-332734/332735,
 Fax: 3312131/Website: www.nhdc.lc



SECOND FLOOR PLAN

LEGEND

	BRICK WALL
	RCC
	STONE
	PCC
	EARTH
	TIMBER

PROJECT: SERVICE CENTER REMODELING

SCALE:	1:50	DRAWING TITLE:	SECOND FLOOR PLAN
DATE:	MARCH-2022	DWG. NO.:	AR-005

ARCHITECT
Pashupati Dyal

GM(DPS)

CEO(NHDCI)

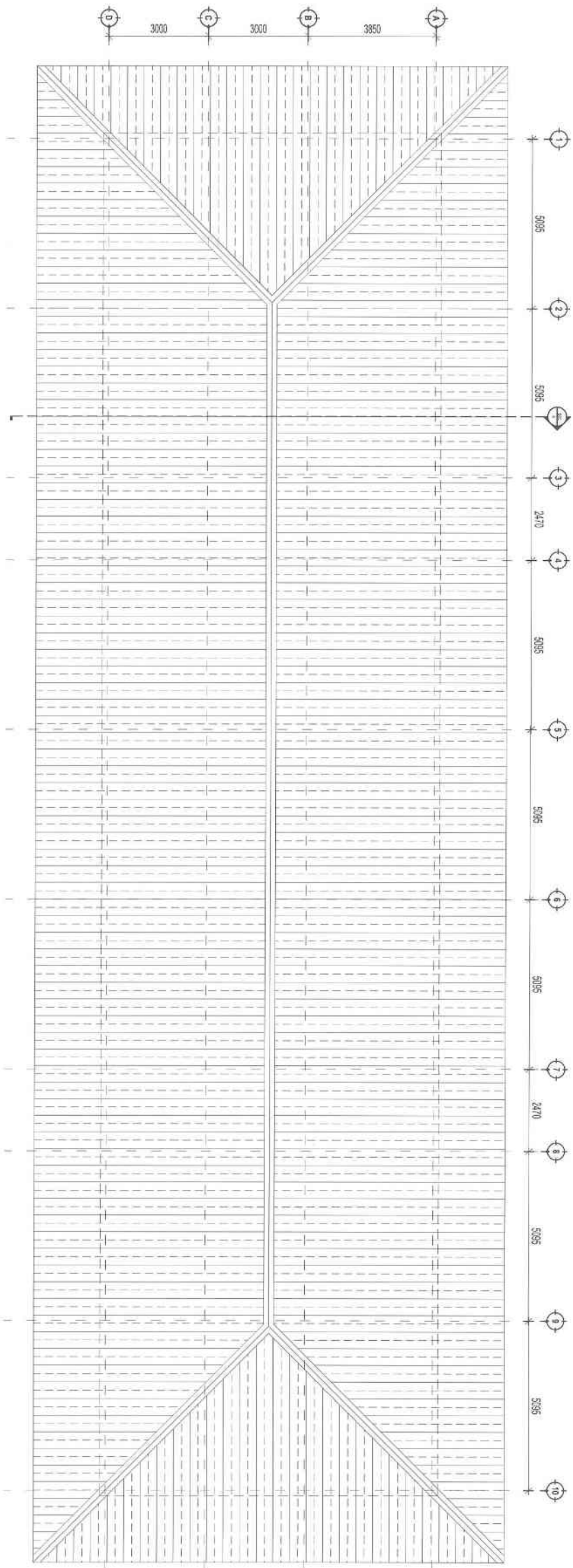


NOTES:

- All dimensions are in millimeters
- Do not measure from the drawing.
- Report any discrepancies to the Architect.
- Contractors or site engineers to verify all dimensions on drawings and on site before commencing any work.

REVISION:	DATE:	REMARKS:

National Housing Development Corporation Ltd.
Design & Planning Services,
PO Box 1439
Thimphu
Tel: # (9753) 00975, 3, 32147 / 33274 / 33275
Fax: 33270 / Website: www.nhdc.lk



ROOF PLAN

- LEGEND**
- BRICK WALL
 - RCC
 - STONE
 - PCC
 - EARTH
 - TIMBER

PROJECT: SERVICE CENTER REMODELING

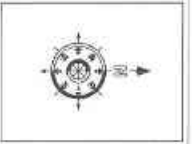
SCALE:	1:50	DRAWING TITLE:	ROOF PLAN
DATE:	MARCH-2022	DWG. NO.:	AR-006

ARCHITECT

 Poshupati Diyolf

GM(DPS)

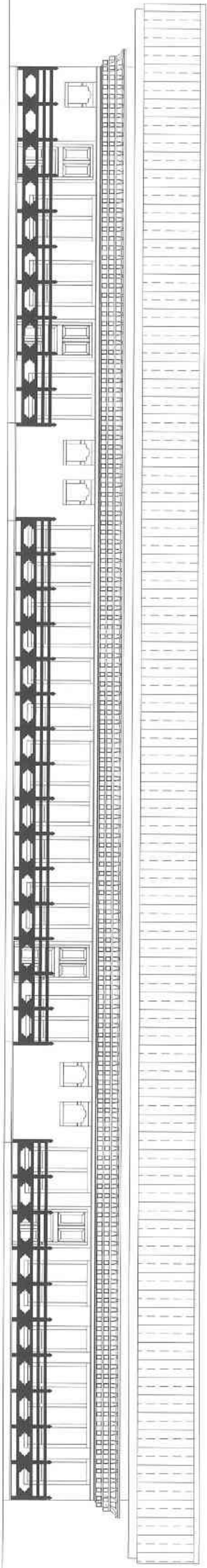
CEO(NHDCI)



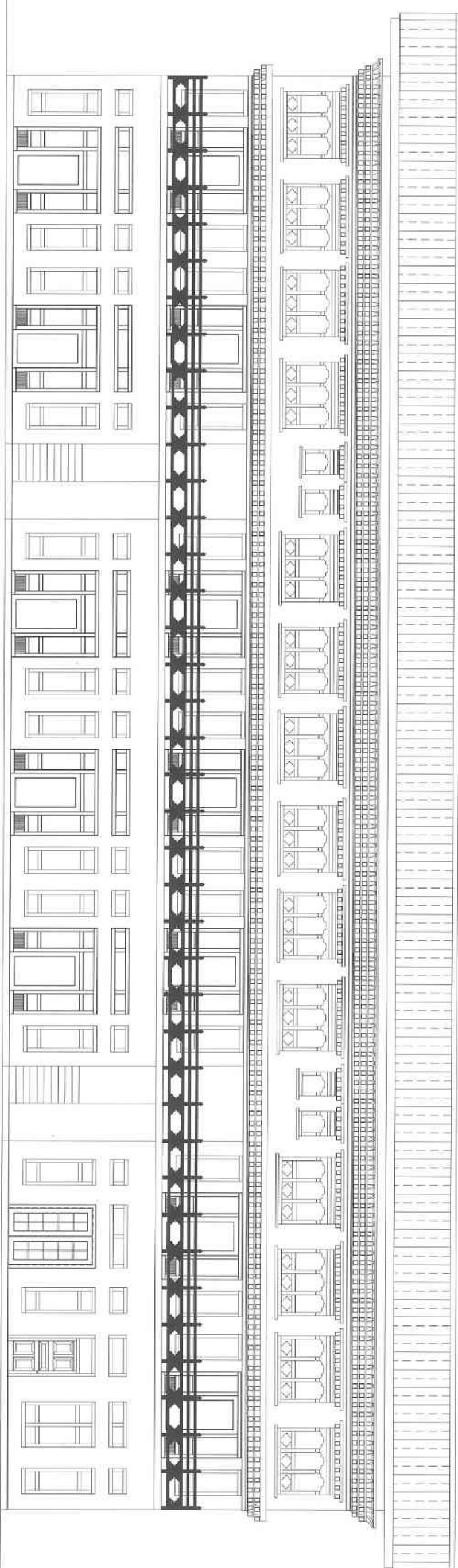
- NOTES:**
- All dimensions are in millimeters
 - Do not measure from the drawing
 - Report any discrepancies to the Architect
 - Contractors or site engineers to verify all dimensions on drawings and on site before commencing any work

REVISION:	DATE:	REMARKS:







National Housing Development Corporation Ltd.
 Design & Planning Services,
 PO Box 1439
 Triplichi
 Tel # (PABX: 00975-2-329147 / 332724 / 332739)
 Fax: 332723 Website: www.nhdc.lc

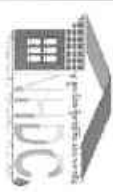


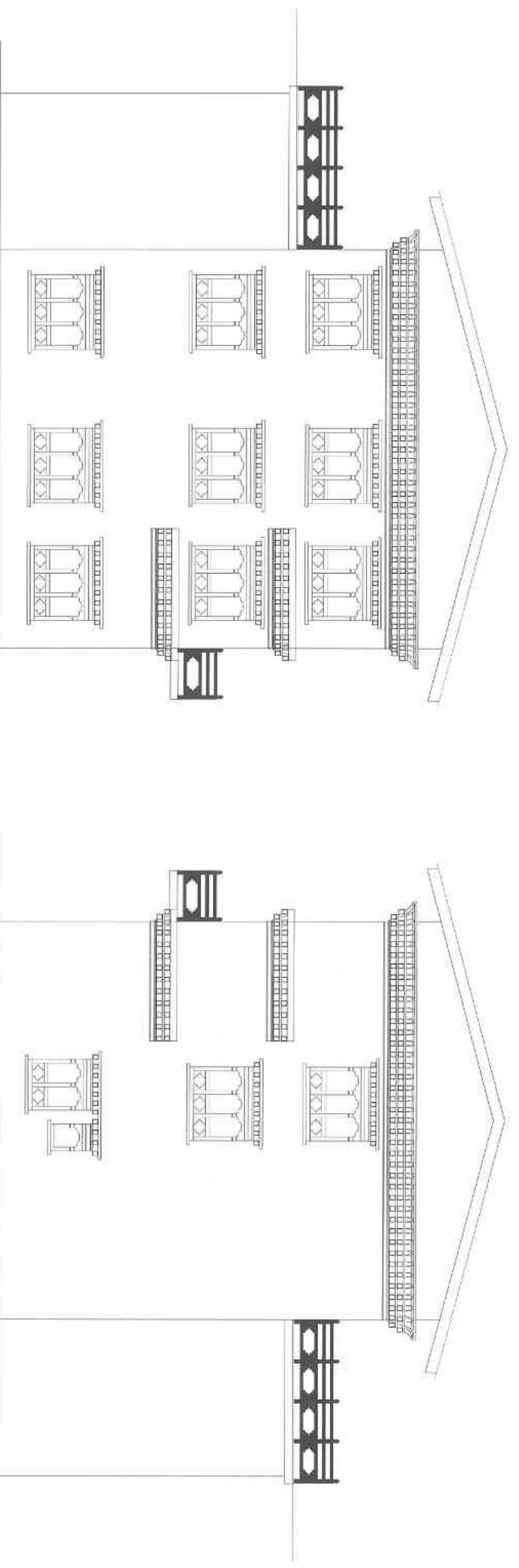
FRONT ELEVATION



REAR ELEVATION

- LEGEND**
-  BRICK WALL
 -  RCC
 -  STONE
 -  PCC
 -  EARTH
 -  TIMBER

PROJECT: SERVICE CENTER REMODELING			
SCALE: 1:50	DRAWING TITLE: ELEVATIONS	DWG. NO: AR-007	ARCHITECT: Pashupati Divoil
DATE: MARCH-2022			G.M.(DPS)
			CEO(NHDCU)
			NOTES:
			<ol style="list-style-type: none"> 1. All dimensions are in millimeters 2. Do not measure from the drawing. 3. Report any discrepancies to the Architect. 4. Contractors or site engineers to verify all dimensions on drawings and on site before commencing any work.
			REVISION: DATE: REMARKS:
			
<p>National Housing Development Corporation Ltd. Design & Planning Services, PO Box 1439 Timphu Tel # (9743) 08975-2-3231/733324/733235, Fax: 331708 Website: www.nhdc.lk</p>			



- LEGEND**
- BRICK WALL
 - RCC
 - STONE
 - PCC
 - EARTH
 - TIMBER

PROJECT: SERVICE CENTER REMODELING

SCALE:	1:50	DRAWING TITLE:	ELEVATIONS
DATE:	MARCH-2022	DWG. NO.:	AR-008

ARCHITECT
Roshupali Dyal

G.M.(DPS)

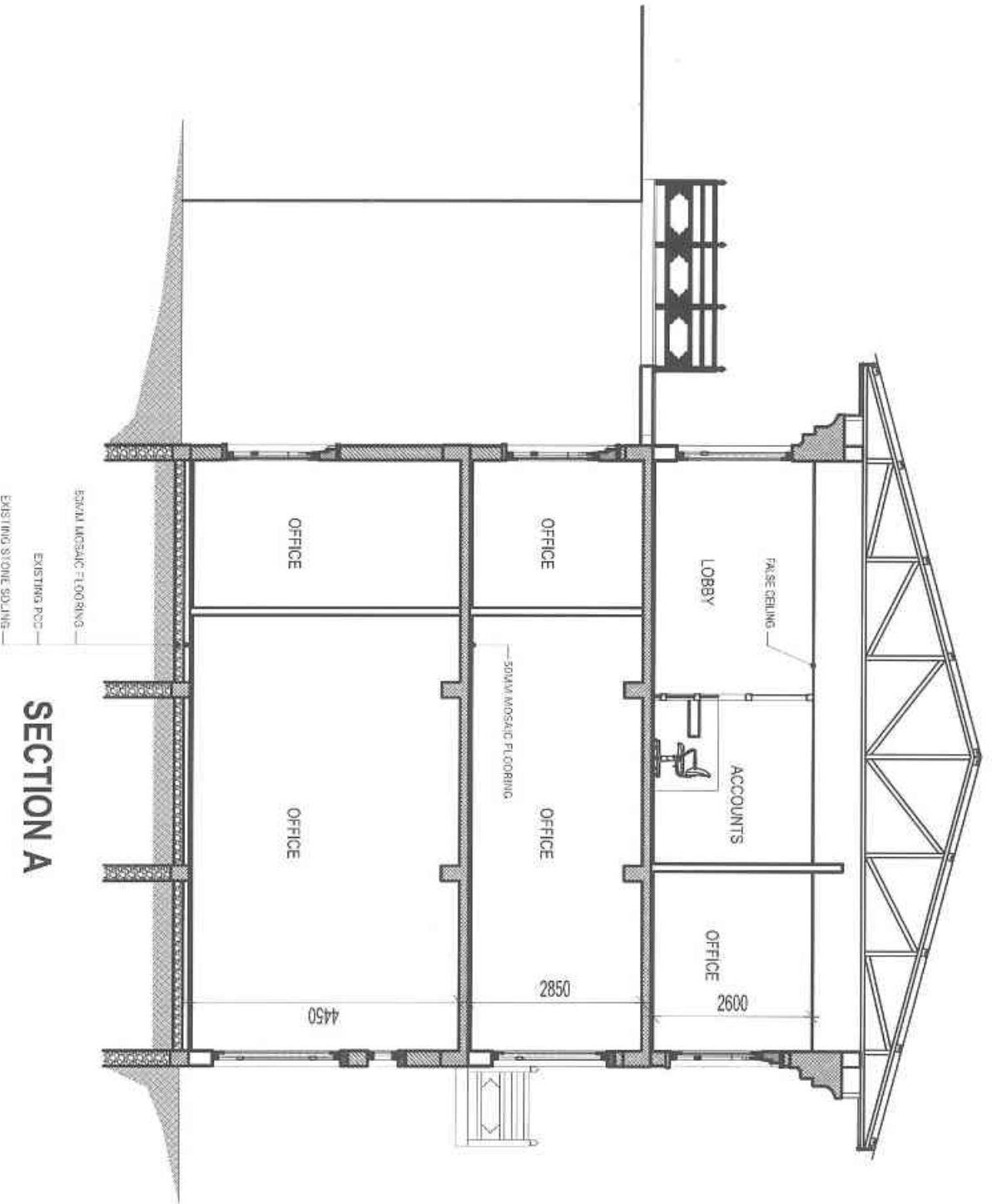
CEO(NHDCU)



- NOTES:**
1. All dimensions are in millimeters
 2. Do not measure from the drawing.
 3. Report any discrepancies to the Architect.
 4. Contractors or site engineers to verify all dimensions on drawings and on site before commencing any work.

REVISION:	DATE:	REMARKS:

National Housing Development Corporation Ltd.
Design & Planning Services
PO Box 1439
Thimphu
Tel # P/AX: 00975-2-221147/332794/332759,
Fax: 33708 Website: www.nhdclt.lk



LEGEND

	BRICK WALL
	RCC
	STONE
	PCC
	EARTH
	TIMBER

PROJECT: SERVICE CENTER REMODELING

SCALE:	1:50	DRAWING TITLE:	SECTION
DATE:	MARCH-2022	DWG. NO.:	AR-009

ARCHITECT

 Pashupati Divoil

GM(DPS)

CEO(NHDCU)

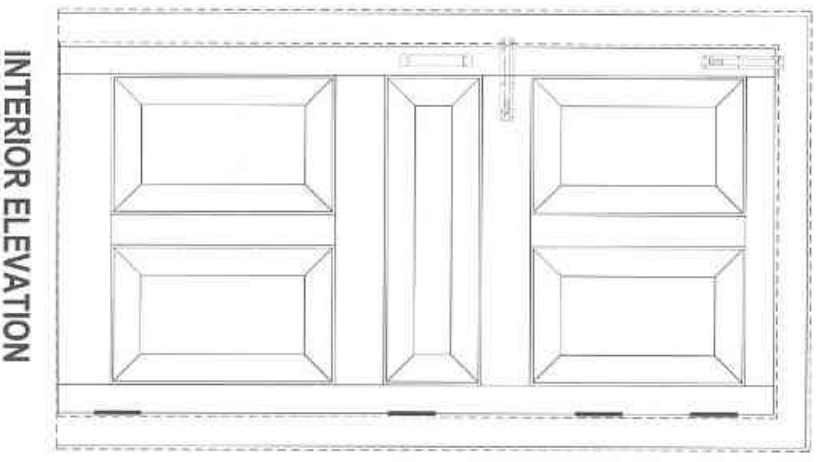


NOTES:

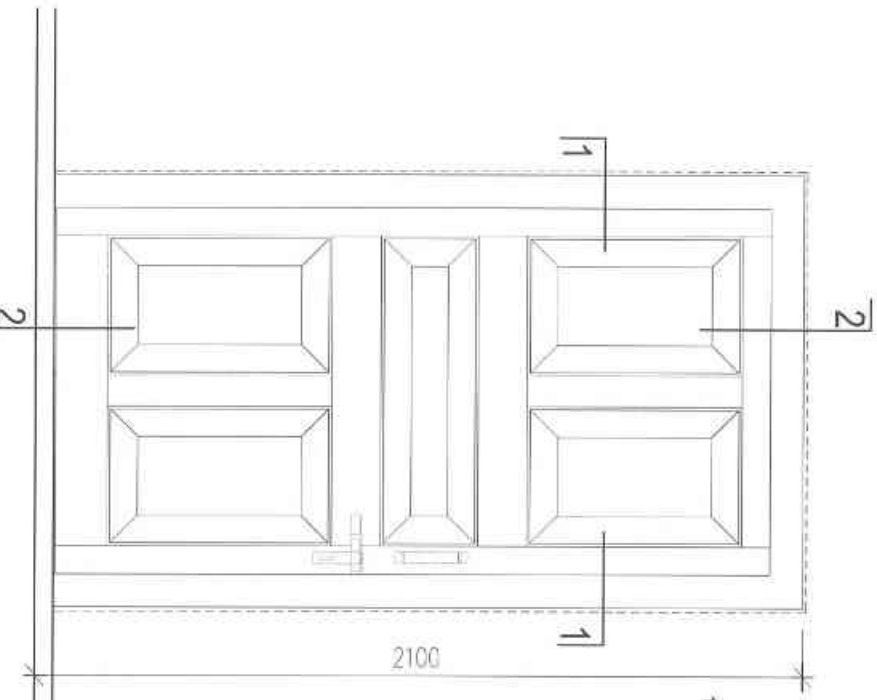
- All dimensions are in millimeters.
- Do not measure from the drawing.
- Report any discrepancies to the Architect.
- Contractors or site engineers to verify all dimensions on drawings and on site before commencing any work.

REVISION:	DATE:	REMARKS:

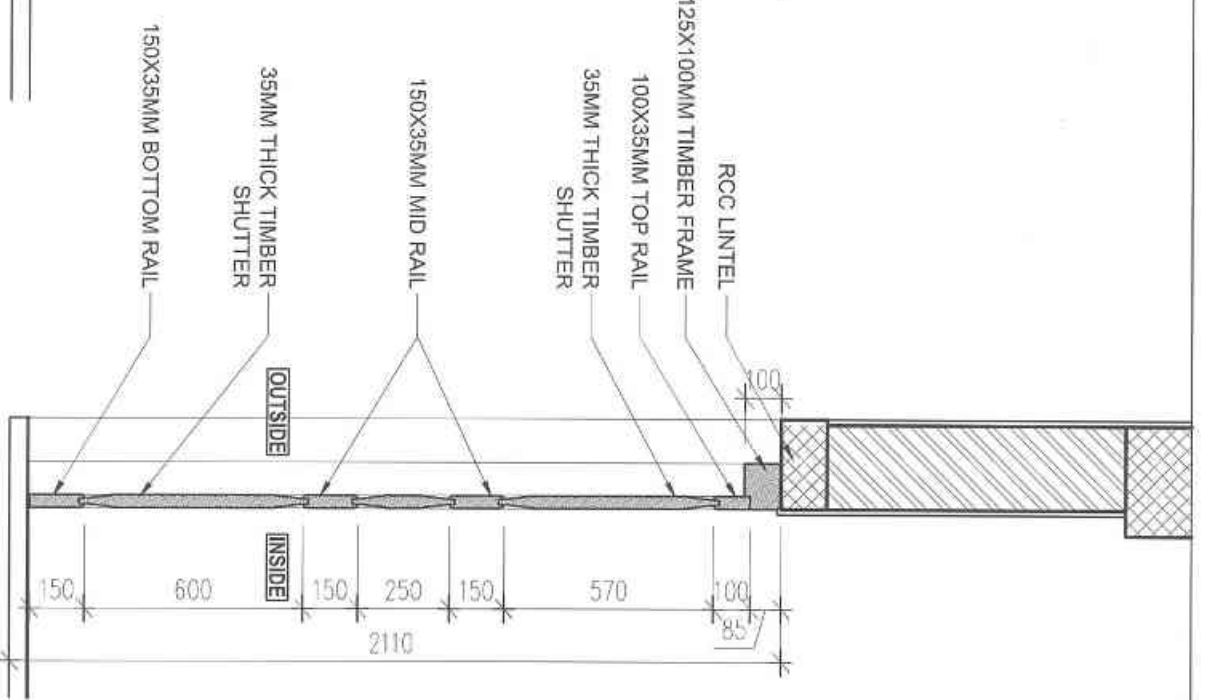
National Housing Development Corporation Ltd.
 Design & Planning Services,
 PO Box 1439
 Thimphu
 Tel # (244X) 00975-2-3231/735274/330735/
 Fax: 33703 Website: www.nhdc.lk



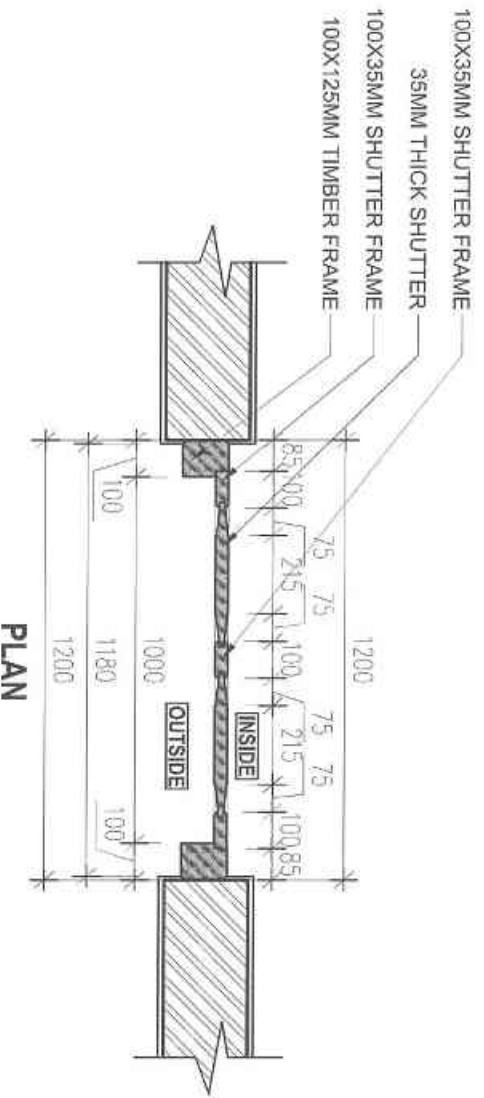
INTERIOR ELEVATION



ELEVATION



SECTION 2-2



PLAN

01 DOOR [D-11]

SCALE 1:20

LEGEND

	BRICK WALL
	RCC
	STONE
	PCC
	EARTH
	TIMBER

PROJECT: SERVICE CENTER REMODELING

SCALE:	1:20	DRAWING TITLE:	DOORS
DATE:	MARCH-2022	DWG. NO.:	AR-010

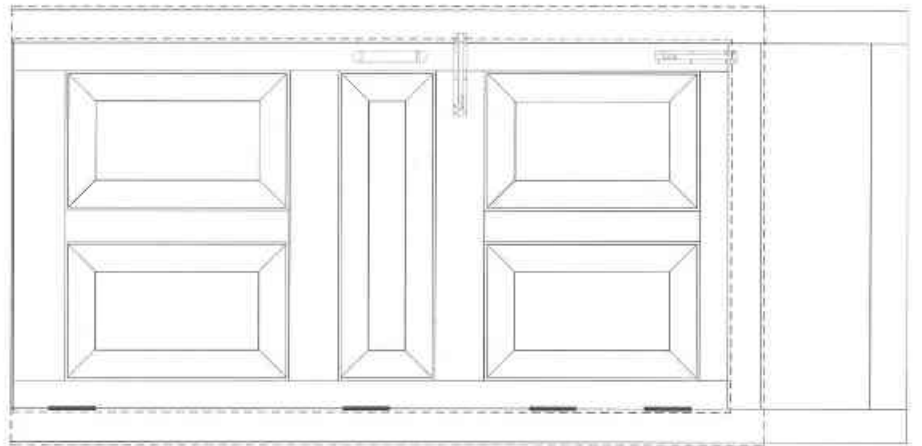
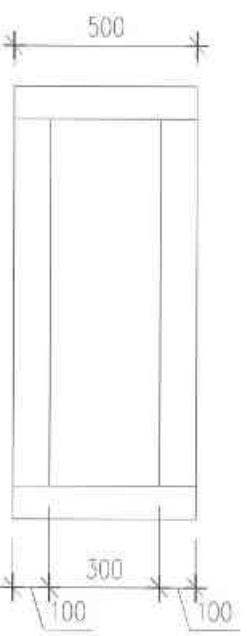
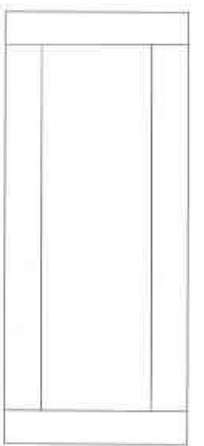
ARCHITECT	
Pashupati Divail	
GM(DPS)	
CEO(NHDCI)	

NOTES:

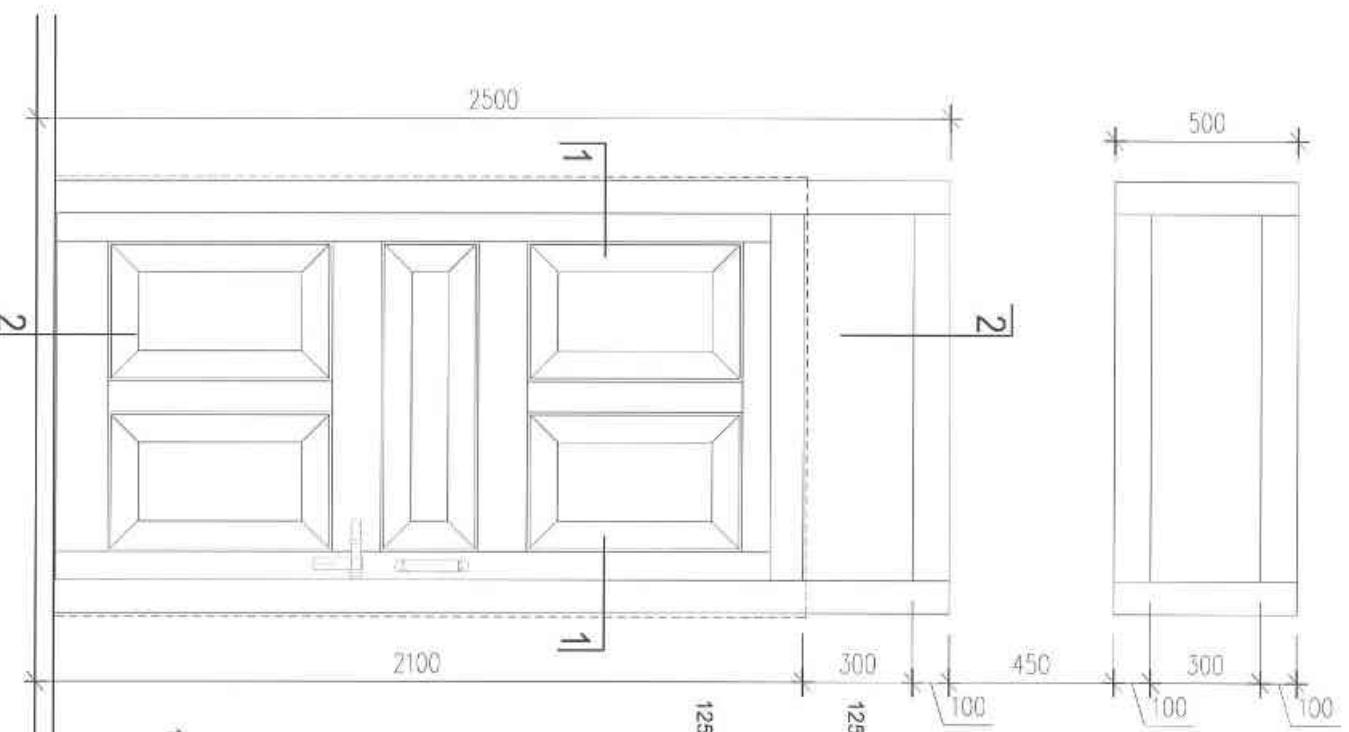
- All dimensions are in millimeters
- Do not measure from the drawing.
- Report any discrepancies to the architect.
- Contractors or site engineers to verify all dimensions on drawings and on site before commencing any work.

REVISION:	DATE:	REMARKS:

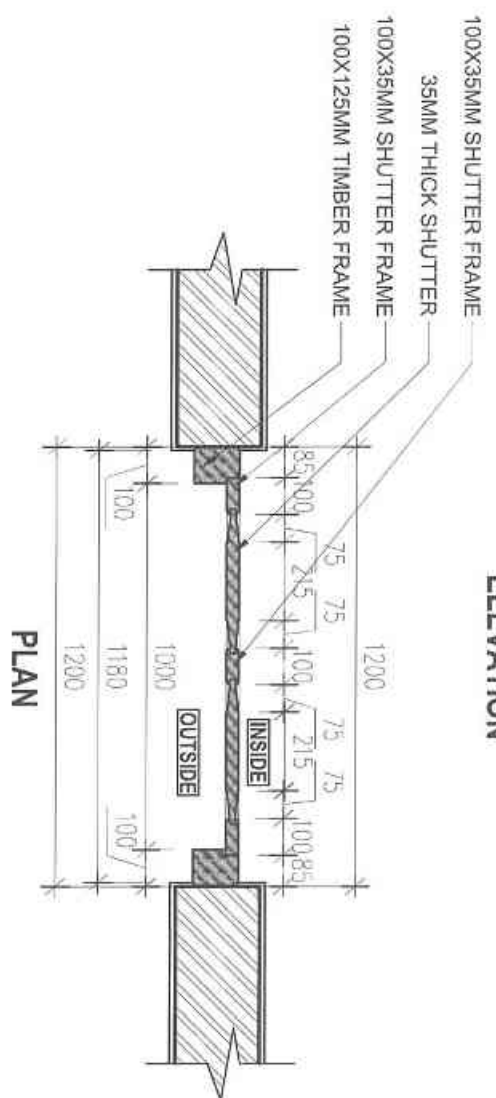
National Housing Development Corporation Ltd.
 Design & Planning Services
 PO Box 1439
 Thimphu
 Tel # (PABX: 0975-2-33141/33234/33235)
 Fax: 331703/1439/33235 www.nhdc.lk



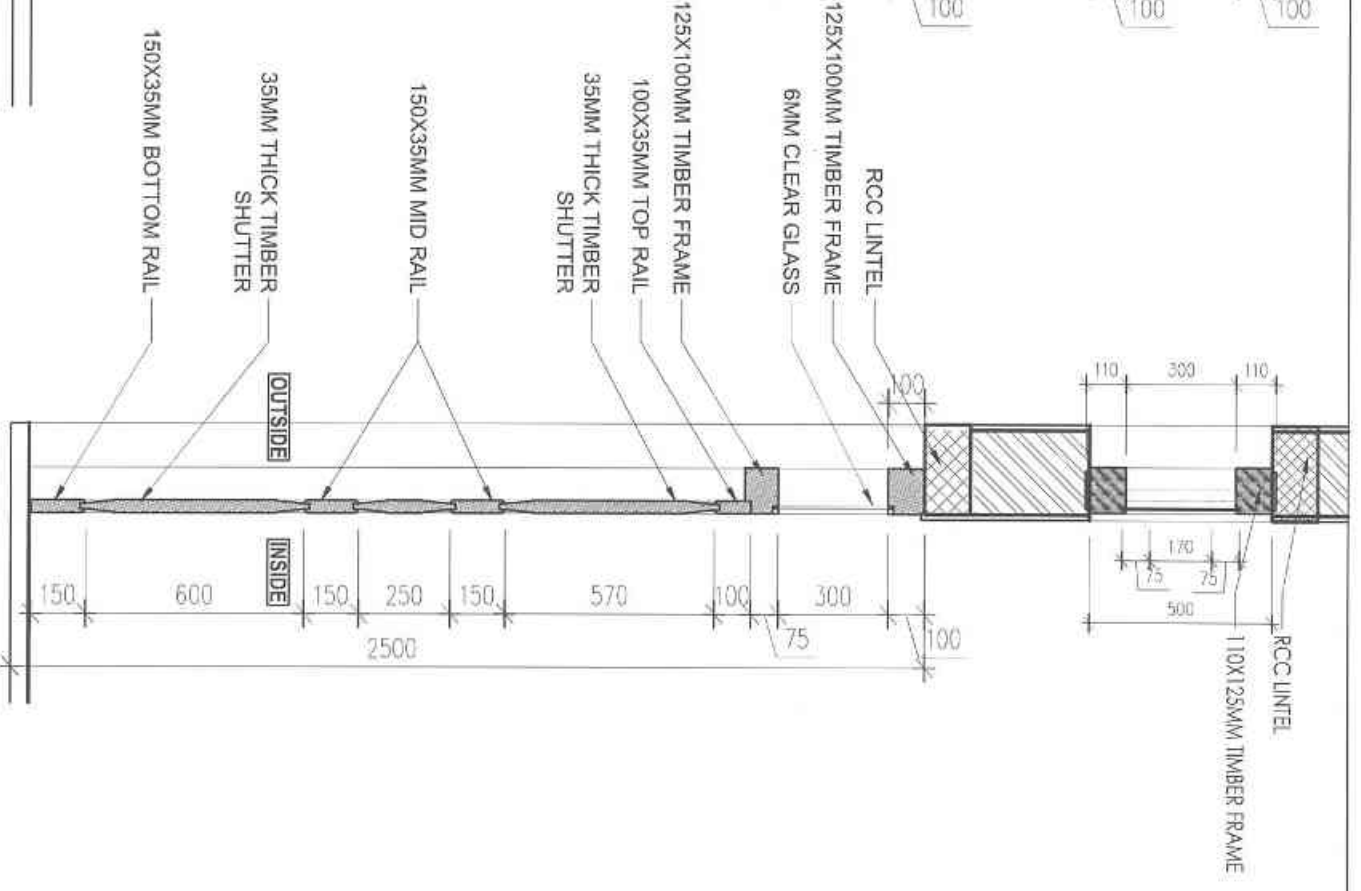
INTERIOR ELEVATION



ELEVATION



PLAN



SECTION 2-2

- LEGEND**
- BRICK WALL
 - RCC
 - STONE
 - PCC
 - EARTH
 - TIMBER

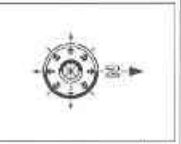
PROJECT: SERVICE CENTER REMODELING

SCALE:	1:20	DRAWING TITLE:	DOORS
DATE:	MARCH-2022	DWG. NO.:	AR-011

ARCHITECT
Pashupati Dwyol

GM(DPS)

CEO(NHDCU)



NOTES:

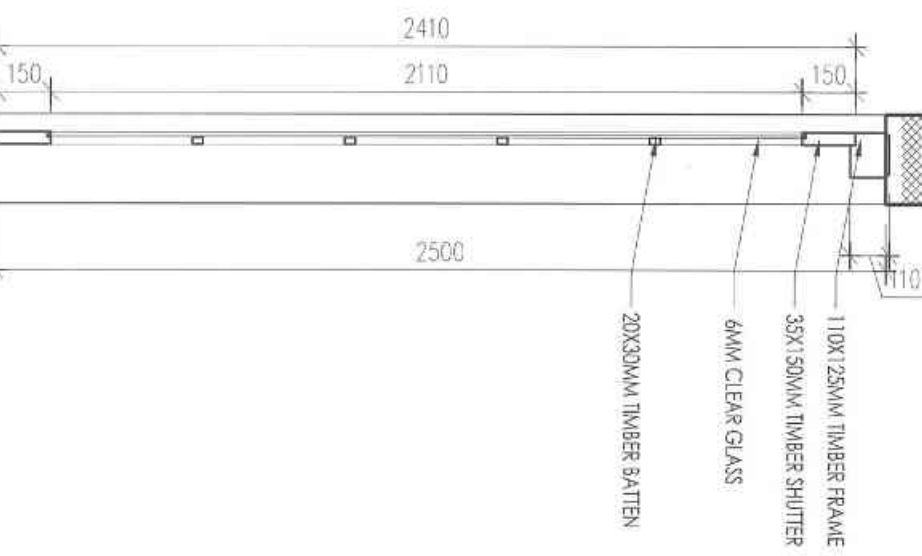
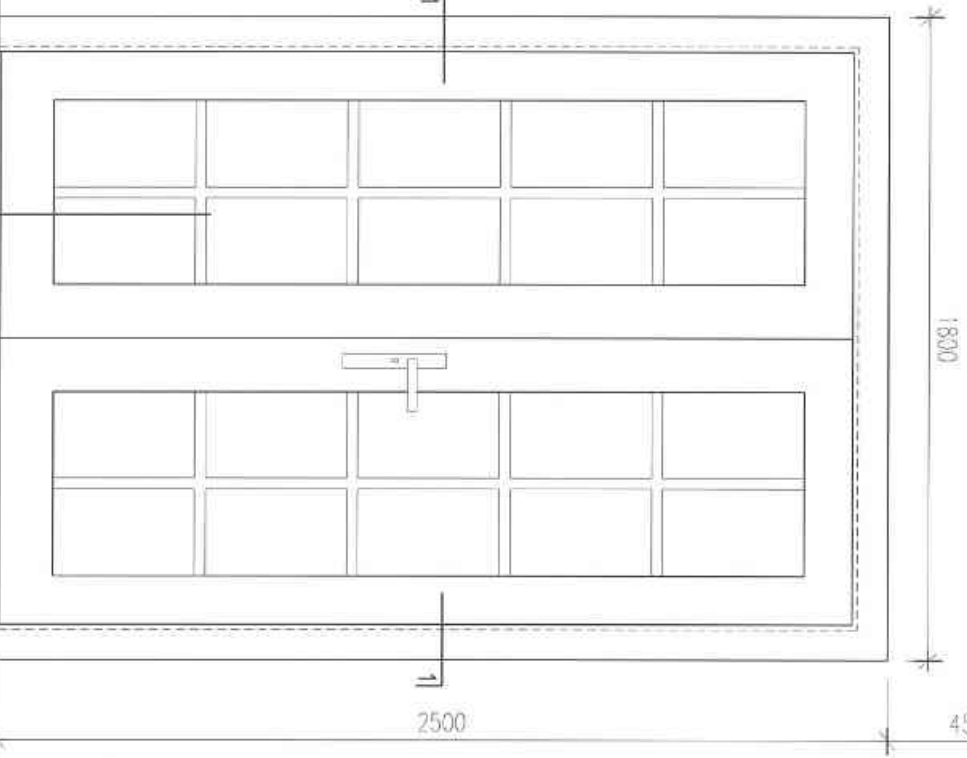
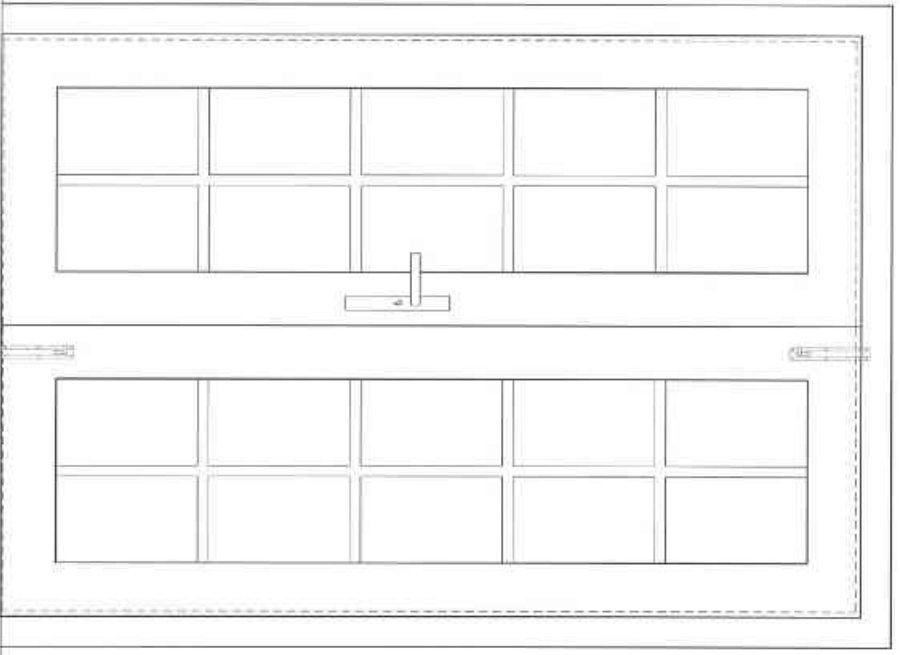
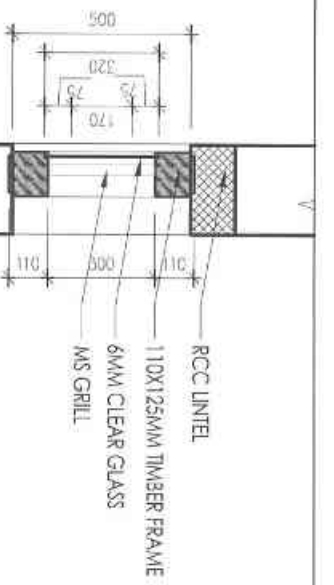
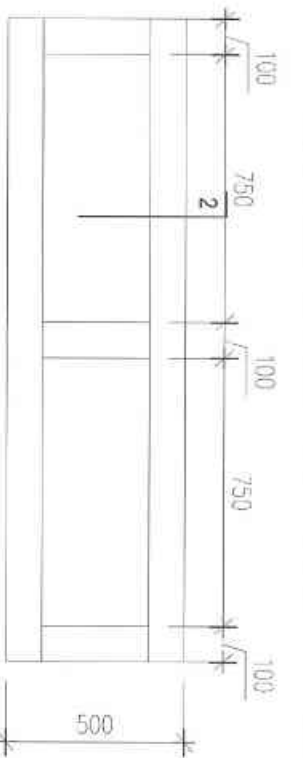
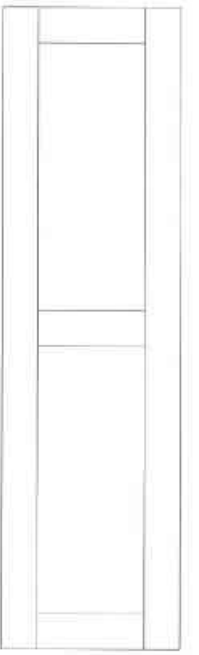
- All dimensions are in millimeters
- Do not measure from the drawing
- Report any discrepancies to the Architect
- Contractors or site engineers to verify all dimensions on drawings and on site before commencing any work

REVISION:	DATE:	REMARKS:

02 DOOR [D-1G]

SCALE 1:20

National Housing Development Corporation Ltd.
Design & Planning Services
PO Box 1438
Thimphu
Tel # (9753) 0095-2, 203147/232734/202739
Fax: 332703 Website: www.nhdc.lk

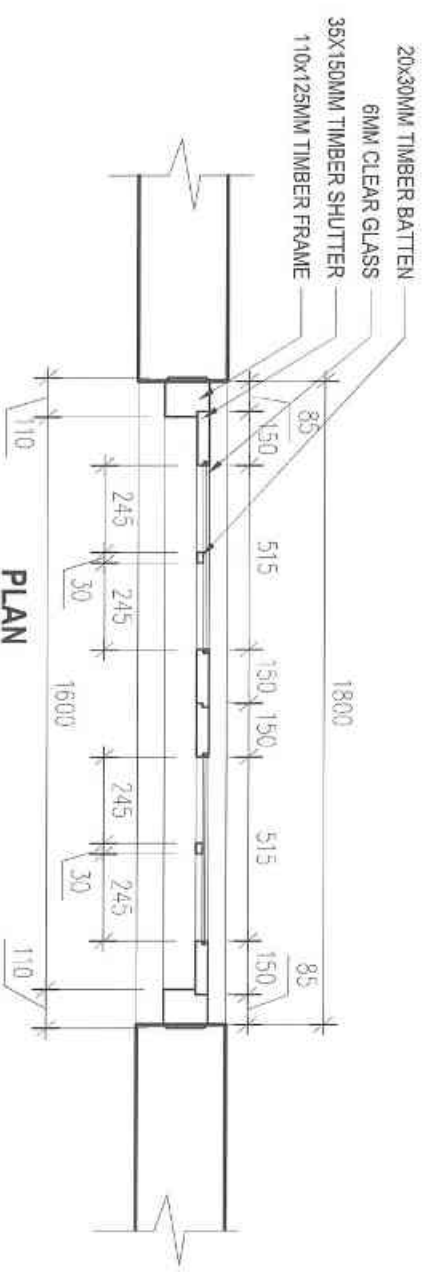


INTERIOR ELEVATION

ELEVATION

SECTION 2-2

- LEGEND**
- BRICK WALL
 - RCC
 - STONE
 - PCC
 - EARTH
 - TIMBER



PLAN

03 DOOR [D-2G]
SCALE 1:20

PROJECT: SERVICE CENTER REMODELING

SCALE:	1:20	DRAWING TITLE:	DOORS
DATE:	MARCH-2022	DWG. NO.:	AR-012

ARCHITECT
Pashupati Dyalal

GM(DPS)

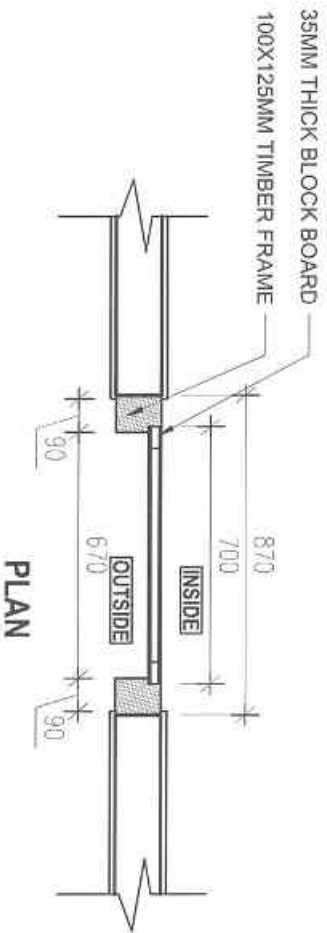
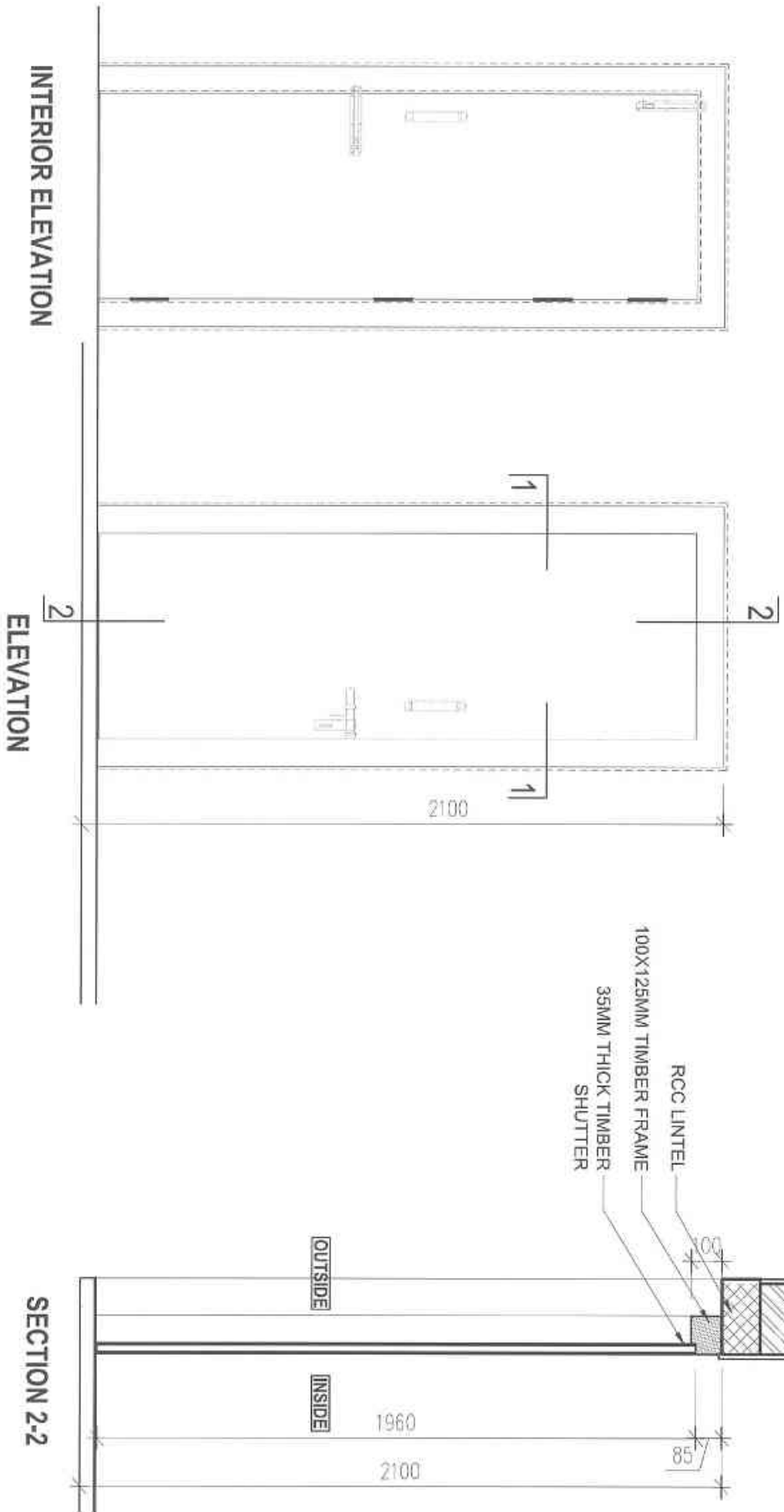
CEO/INHDCU



- NOTES:**
- All dimensions are in millimeters.
 - Do not measure from the drawing.
 - Report any discrepancies to the Architect.
 - Contractors or site engineers to verify all dimensions on drawings and on site before commencing any work.

REVISION:	DATE:	REMARKS:

National Housing Development Corporation Ltd.
Design & Planning Services,
PO Box 1439
Thimphu
Tel # (9753) 00975-2, 32147/33234/33279,
Fax: 331215/330616, www.nhdcl.com



05 DOOR [D-31]

SCALE 1:20

LEGEND

	BRICK WALL
	RCC
	STONE
	PCC
	EARTH
	TIMBER

PROJECT: SERVICE CENTER REMODELING

SCALE:	1:20	DRAWING TITLE:	DOORS
DATE:	MARCH-2022	DWG. NO.:	AR-014

ARCHITECT
Pashupati Dyal

G.M.(DPS)

CEO (NHDCU)



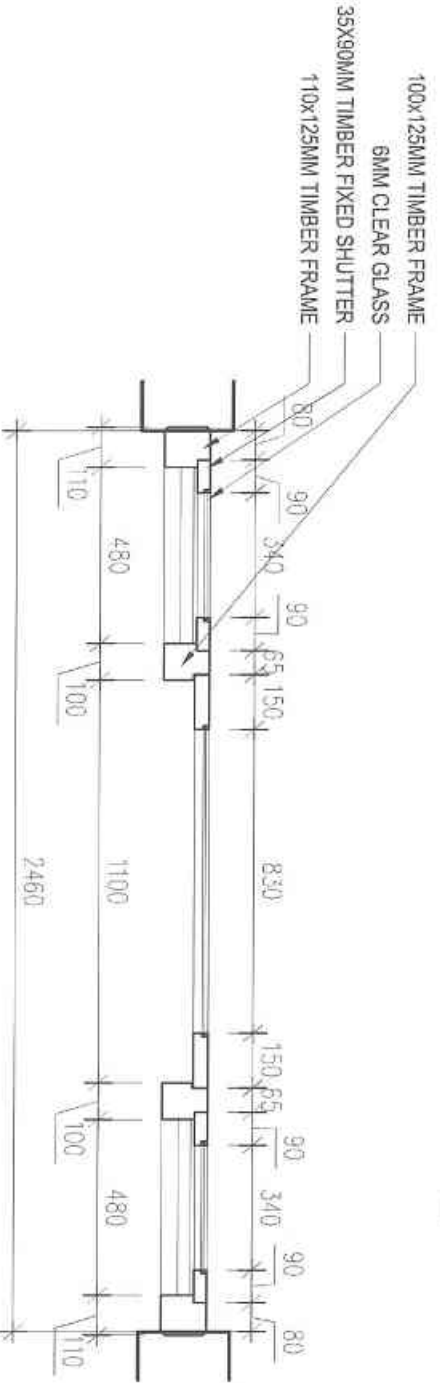
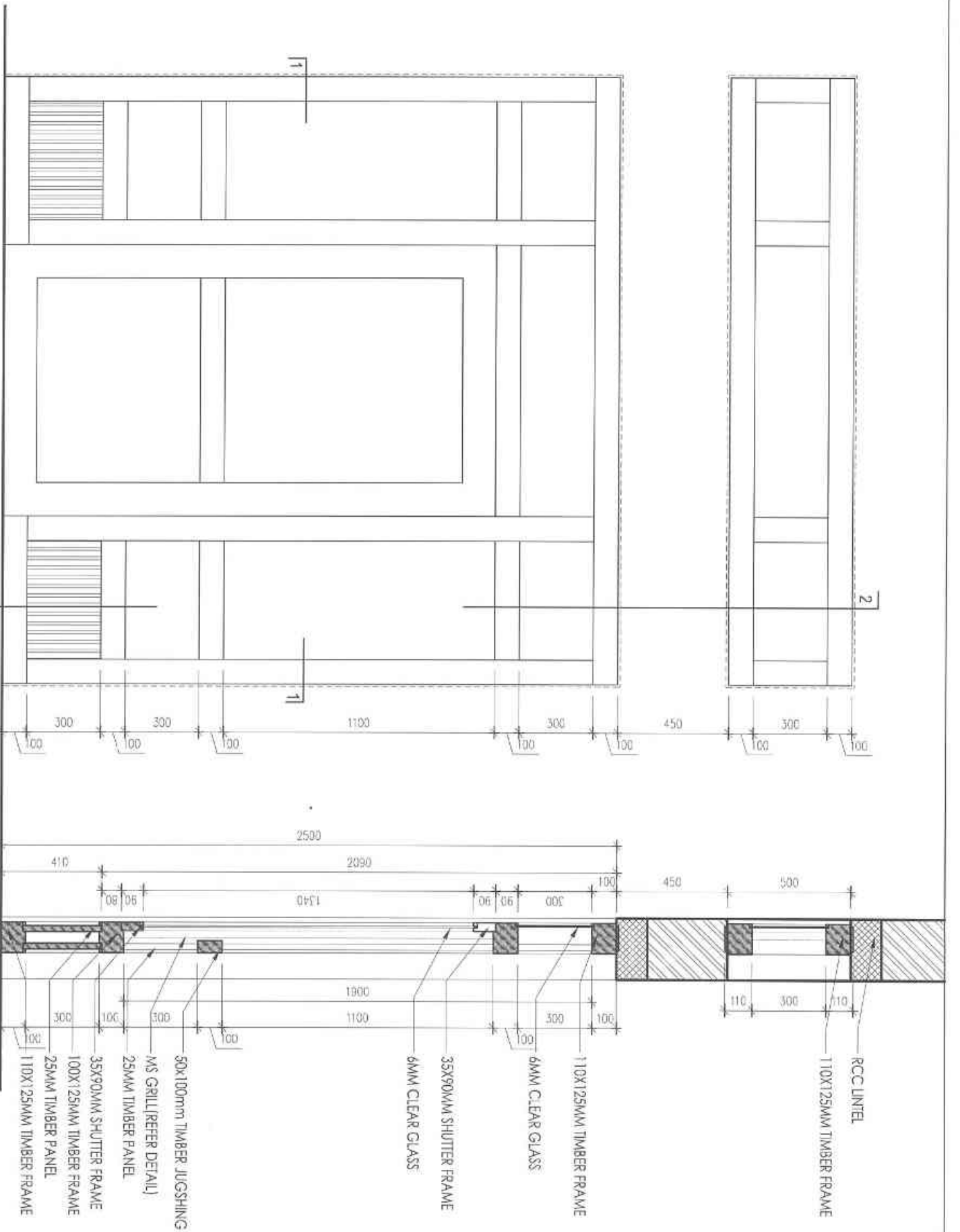
- NOTES:**
- All dimensions are in millimeters.
 - Do not measure from the drawing.
 - Report any discrepancies to the Architect.
 - Contractors or site engineers to verify all dimensions on drawings and on site before commencing any work.

REVISION:	DATE:	REMARKS:

National Housing Development Corporation Ltd.
Design & Planning Services,
PO Box 1439
Thimphu
Tel # (2488) 00975-2, 323147/332734/332735.
Fax: 337203, Website: www.nhdclt.lk

DOOR-W-D(G)	
	OUTSIDE
MATERIAL	LOCAL MC FOR WINDOW FRAMES AND MS FLAT FOR GRILLS
FINISHING	TRADITIONAL PAINTINGS
HARDWARE	
NOTES	

	INSIDE
MATERIAL	LOCAL MC TIMBER SHUTTER FRAME
FINISHING	CLEAR LACQUER POLISH
HARDWARE	4 NOS. STAINLESS STEEL DOUBLE ACTION HINGES, 1 NO. MORTISE LOCK, 2 NOS. HANDLES, SCREW
NOTES	1. WINDOW SHUTTERS TO BE FIXED AFTER PROPER POLISHING



07 DOOR [W-D(G)]

SCALE 1:20

LEGEND

	BRICK WALL
	RCC
	STONE
	PCC
	EARTH
	TIMBER

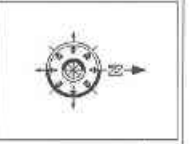
PROJECT: SERVICE CENTER REMODELING

SCALE:	1:20	DRAWING TITLE:	DOORS
DATE:	MARCH-2022	DWG. NO.:	AR-016

ARCHITECT
Pushpatti Divoil

GM(DPS)

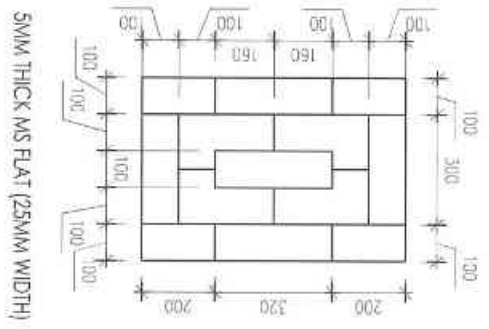
CEO (NHDCU)



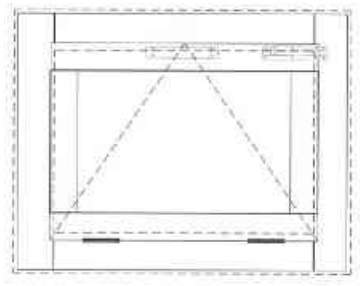
- NOTES:**
- All dimensions are in millimeters
 - Do not require from the drawing
 - Report any discrepancies to the Architect
 - Contractors or site engineers to verify all dimensions on drawings and on site before commencing any work

REVISION:	DATE:	REMARKS:

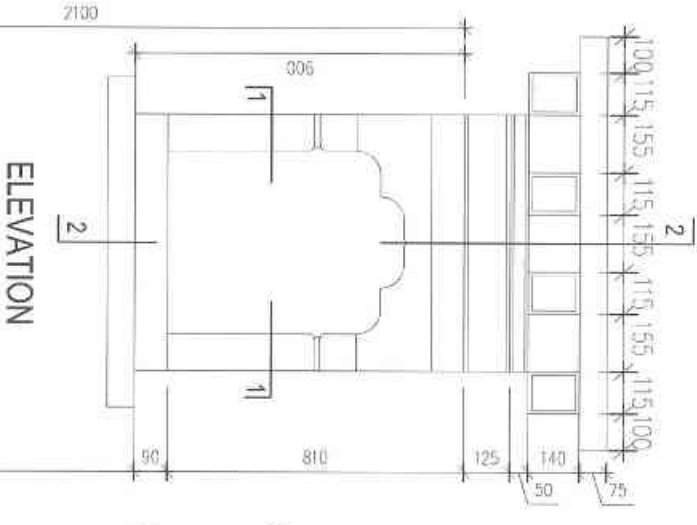
National Housing Development Corporation Ltd.
Design & Planning Services
PO Box 1439
Thimphu
Tel # (PABX) 09753-323147 / 332734 / 332735
Fax: 313703 Website: www.nhdcl.tz



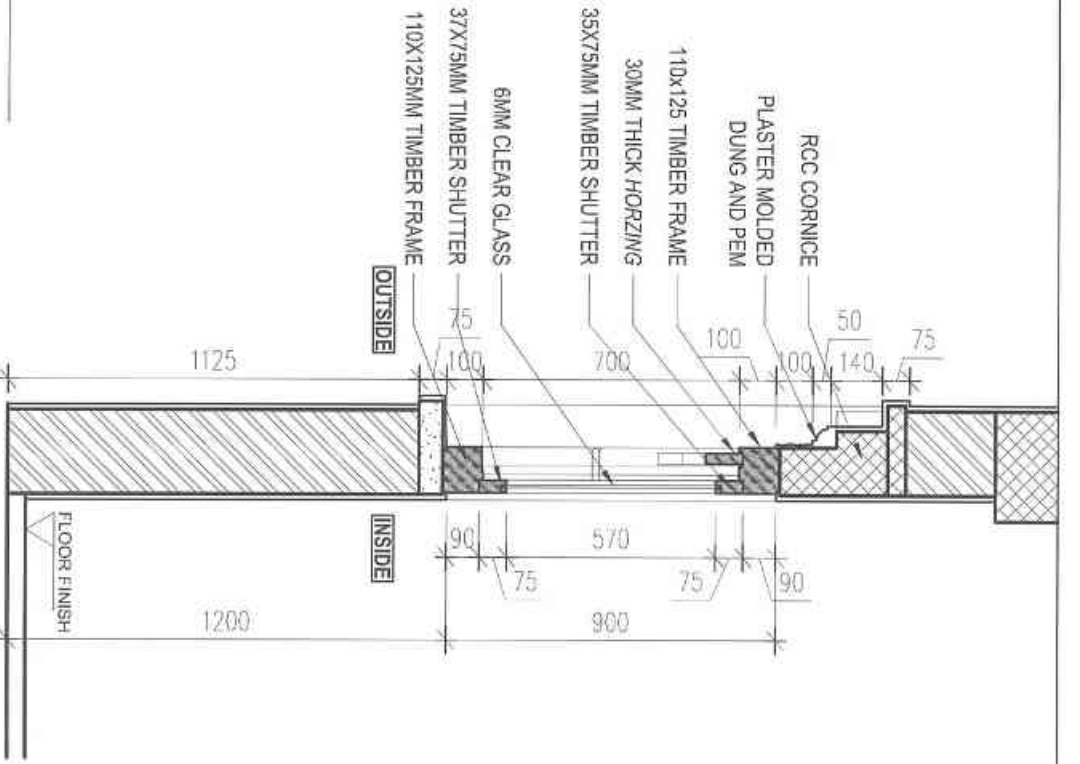
5MM THICK MS FLAT (25MM WIDTH)



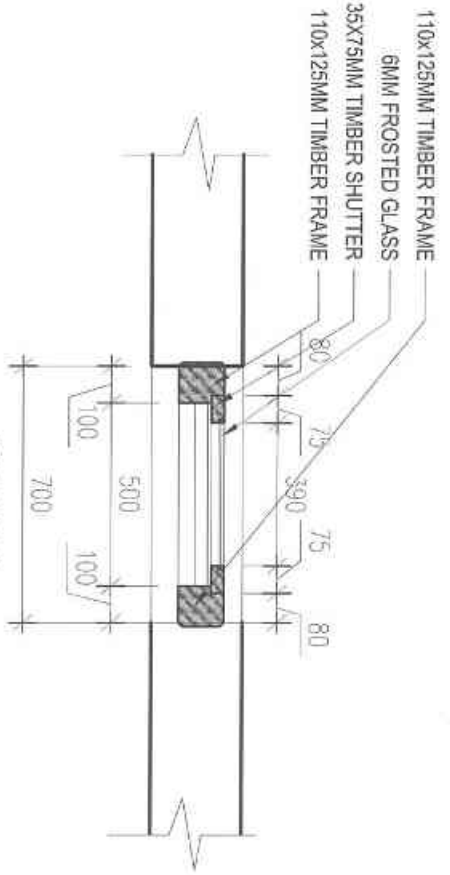
INTERIOR ELEVATION



ELEVATION



SECTION 2-2



PLAN 1-1

WINDOW-T-1	
OUTSIDE	INSIDE
MATERIAL	LOCAL MC FOR WINDOW FRAMES AND MS FLAT FOR GRILLS
FINISHING	TRADITIONAL PAINTINGS
HARDWARE	CLEAR LACQUER POLISH
NOTES	1. GRILLS TO BE PROVIDED ONLY FOR WINDOWS ON THE GROUND FLOOR 2 NOS. STAINLESS STEEL HINGES, 1 NOS. SS TOWER BOLT, 1 NOS. HANDLES, SCREW 1. WINDOW SHUTTERS TO BE FIXED AFTER PROPER POLISHING

- LEGEND**
- BRICK WALL
 - RCC
 - STONE
 - PCC
 - EARTH
 - TIMBER

PROJECT: SERVICE CENTER REMODELING

SCALE:	1:20	DRAWING TITLE:	WINDOWS
DATE:	MARCH-2022	DWG. NO.:	AR-017

ARCHITECT: Pashupati Divoil

GM(DPS): [Signature]

CEO(NHDCU): [Signature]

NOTES:

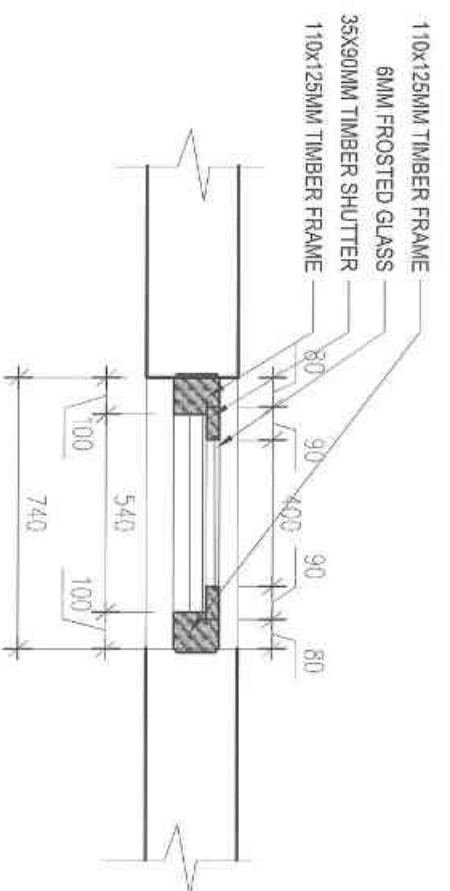
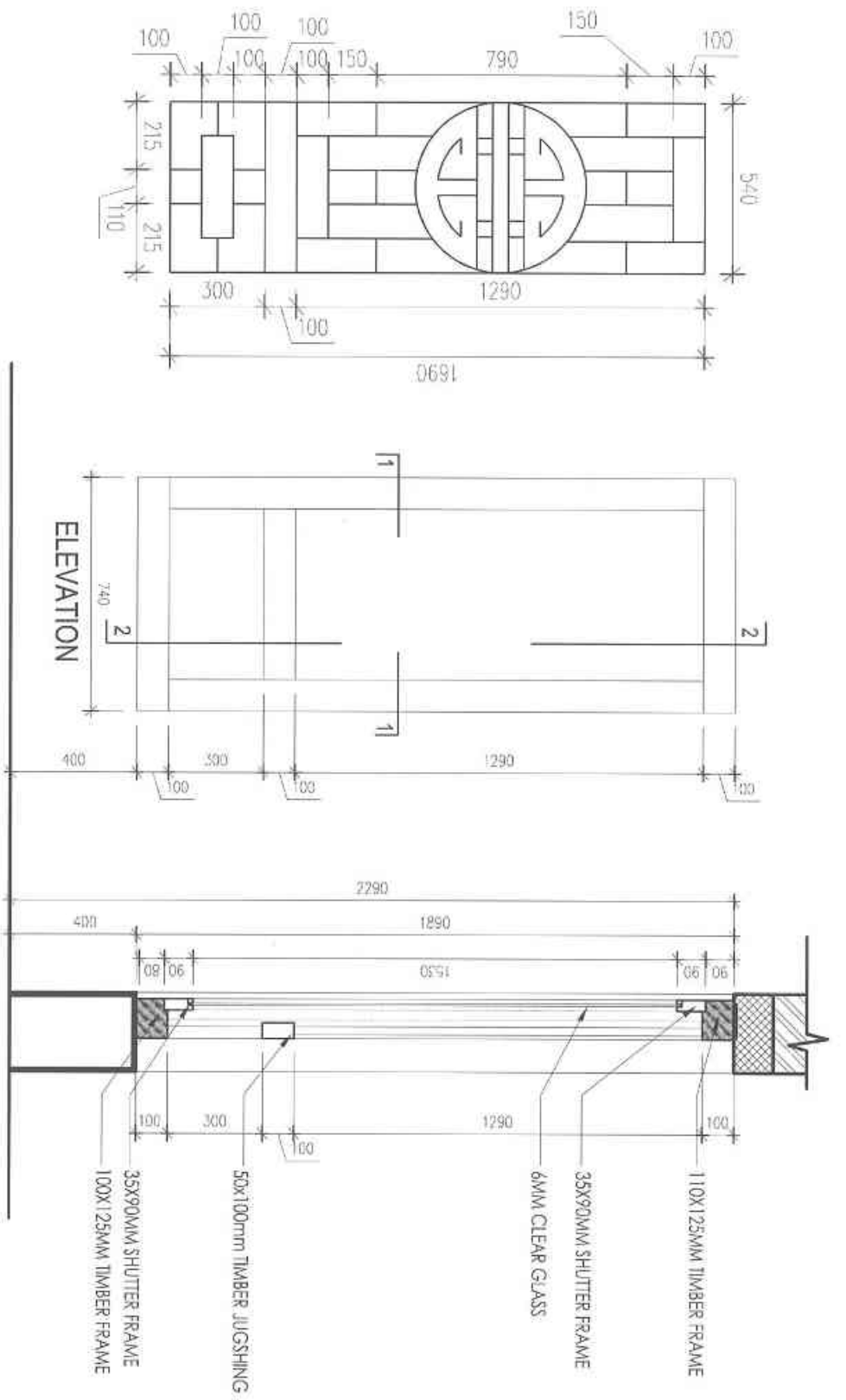
- All dimensions are in millimeters
- Do not measure from the drawing
- Report any discrepancies to the architect
- Contractors or site engineers to verify all dimensions on drawings and on site before commencing any work.

REVISION:	DATE:	REMARKS:

National Housing Development Corporation Ltd.
 Design & Planning Services,
 PO Box 1439
 Thimphu
 Td # (PA&C): 00975-2-323147/332734/332735,
 Fax: 337201, Website: www.nhdcd.bt

08 WINDOW [W-1T]

SCALE 1:20



09 WINDOW [W-1]

SCALE 1:20

WINDOW-W-1	
OUTSIDE	INSIDE
MATERIAL: LOCAL MIC FOR WINDOW FRAMES AND MS FLAT FOR GRILLS	LOCAL MIC TIMBER SHUTTER FRAME
FINISHING: TRADITIONAL PAINTINGS	CLEAR LACQUER POLISH
HARDWARE:	2 NOS. STAINLESS STEEL HINGES; 1 NOS. SS TOWER BOLT; 1 NOS. HANDLES; SCREW
NOTES:	1. WINDOW SHUTTERS TO BE FIXED AFTER PROPER POLISHING

- LEGEND**
- BRICK WALL
 - RCC
 - STONE
 - PCC
 - EARTH
 - TIMBER

PROJECT: SERVICE CENTER REMODELING

SCALE: 1:20	DRAWING TITLE: WINDOWS	DWG. NO. AR-018
DATE: MARCH-2022	ARCHITECT: Poshupoti Dhyoi	GM(DPS)
	CEO (NHDCU)	

NOTES:

- All dimensions are in millimeters
- Do not measure from the drawing.
- Report any discrepancies to the Architect.
- Contractors or site engineers to verify all dimensions on drawings and on site before commencing any work.

REVISION:

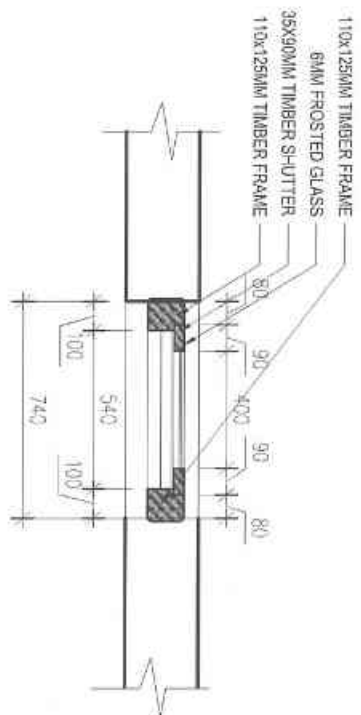
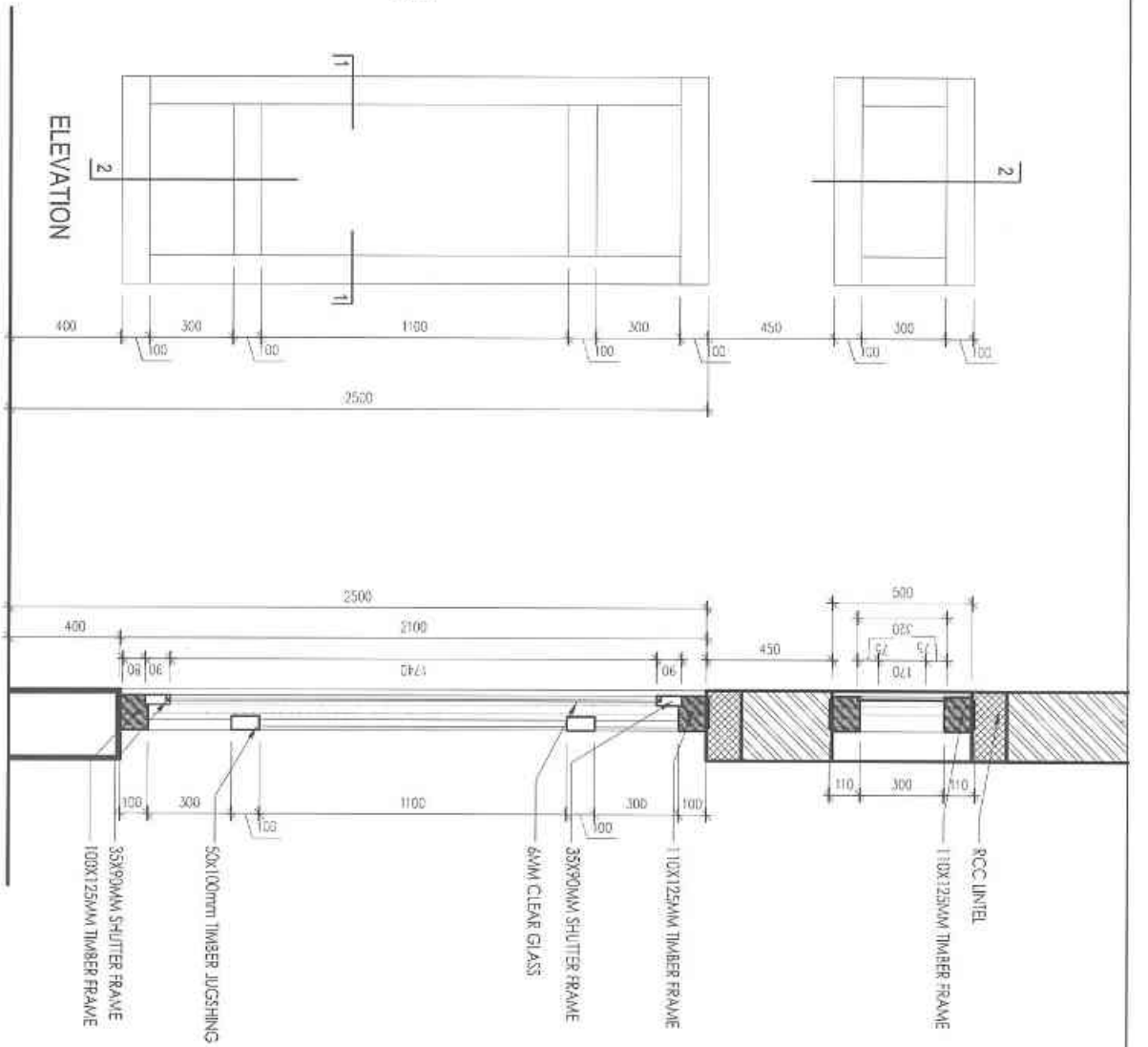
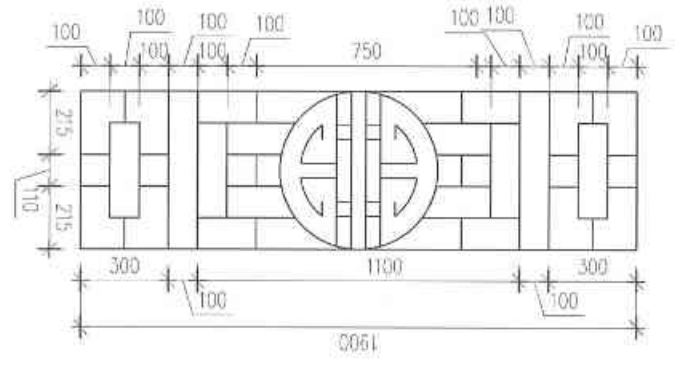
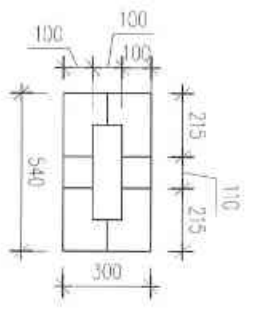
NO.	DATE	REMARKS

ARCHITECT: Poshupoti Dhyoi

GM(DPS): [Signature]

CEO (NHDCU): [Signature]

National Housing Development Corporation Ltd.
 Design & Planning Services
 PO Box 1439
 Thimphu
 Tel # (PABX) 00975-2-323147/332724/332725;
 Fax: 337203; Website: www.nhdc.lk



10 WINDOW [W-1(G)]

SCALE 1:20

WINDOW-W-1(G)	
OUTSIDE	INSIDE
MATERIAL	LOCAL MC FOR WINDOW FRAMES AND MS FLAT FOR GRILLS
FINISHING	TRADITIONAL PAINTINGS
HARDWARE	CLEAR LAQUER POLISH
NOTES	1. WINDOW SHUTTERS TO BE FIXED AFTER PROPER POLISHING. 2 NOS. STAINLESS STEEL HINGES, 1 NOS. SS TOWER BOLT, 1 NOS. HANDLES, SCREW

- LEGEND**
- BRICK WALL
 - RCC
 - STONE
 - PCC
 - EARTH
 - TIMBER

PROJECT: SERVICE CENTER REMODELLING

SCALE: 1:20 DRAWING TITLE: WINDOWS

DATE: MARCH-2022 DWG. NO: AR-019

ARCHITECT: Pashupati Dyoil

G.M(DPS):

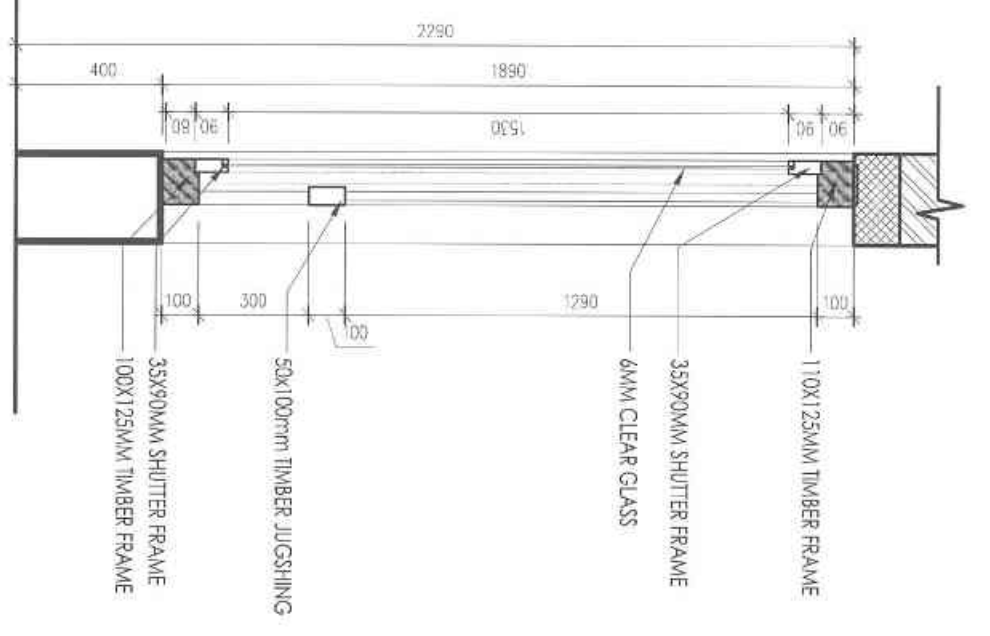
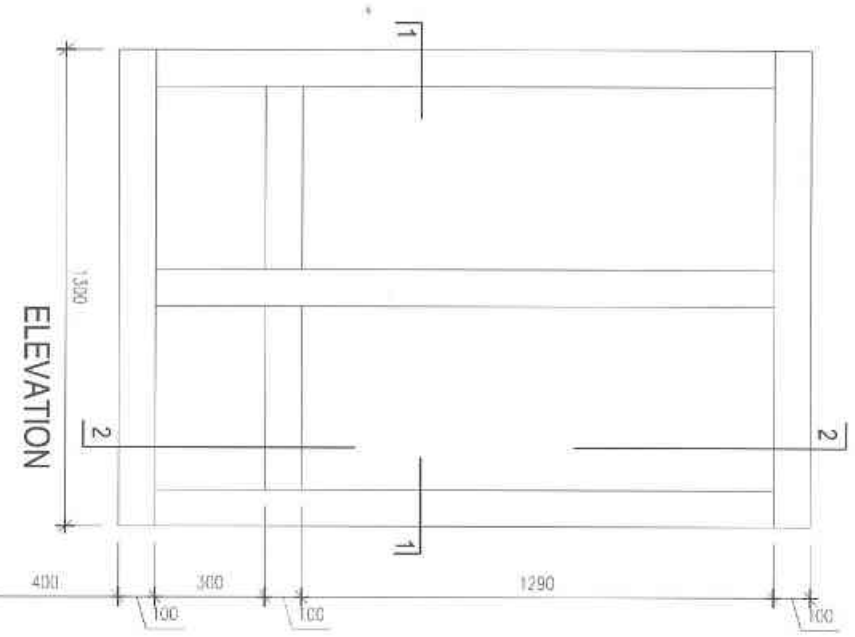
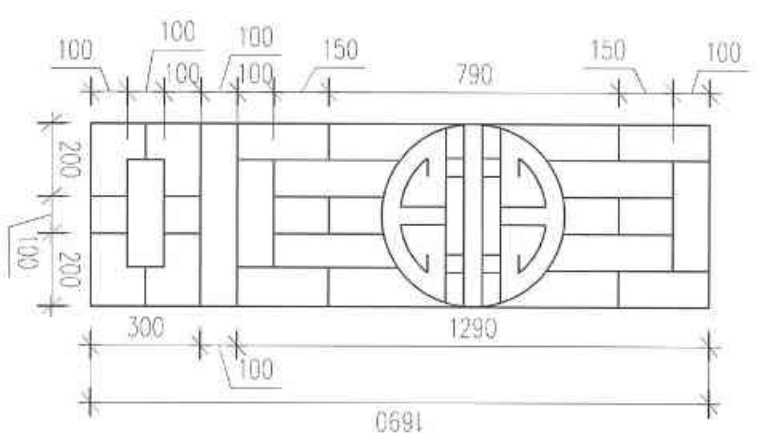
CEO(NHDCU):

NOTES:

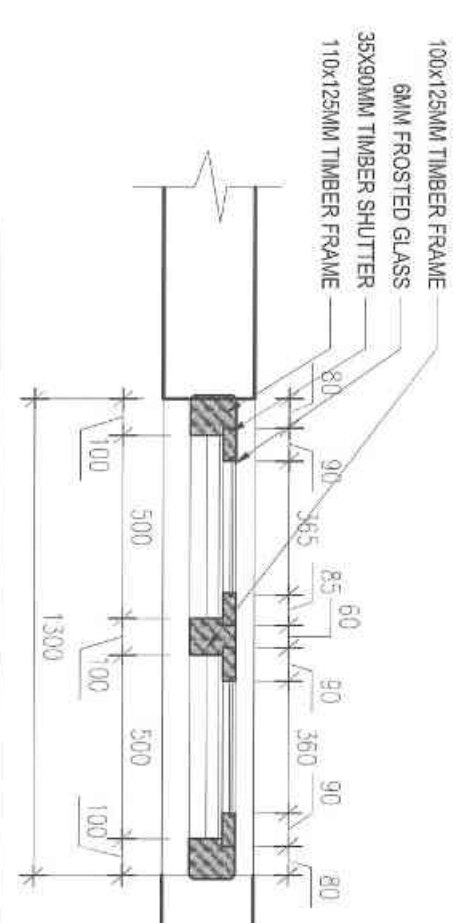
- All dimensions are in millimeters.
- Do not measure from the drawing.
- Report any discrepancies to the architect.
- Contractors or site engineers to verify all dimensions on drawings and on site before commencing any work.

REVISION	DATE	REMARKS

National Housing Development Corporation Ltd.
 Design & Planning Services,
 PO Box 1439
 Thimphu
 Tel: # (PABX) 0925-2-3214/230234/232239
 Fax: 3317051/3317052 www.nhdc.lk



SECTION 2-2



11 WINDOW [W-2]
SCALE 1:20

- LEGEND**
- BRICK WALL
 - RCC
 - STONE
 - PCC
 - EARTH
 - TIMBER

WINDOW-W-1	
OUTSIDE	INSIDE
MATERIAL	LOCAL MC FOR WINDOW FRAMES AND MS FLAT FOR GRILLS
FINISHING	TRADITIONAL PAINTINGS
HARDWARE	CLEAR LACQUER POLISH
NOTES	1. WINDOW SHUTTERS TO BE FIXED AFTER PROPER POLISHING 2 NOS. STAINLESS STEEL HINGES, 1 NOS. SS TOWER BOLT, 1 NOS. HANDLES, SCREW

PROJECT: SERVICE CENTER REMODELING

SCALE:	1:20	DRAWING TITLE:	WINDOWS
DATE:	MARCH-2022	DWG. NO.:	AR-020

ARCHITECT: Pashupati Divoil

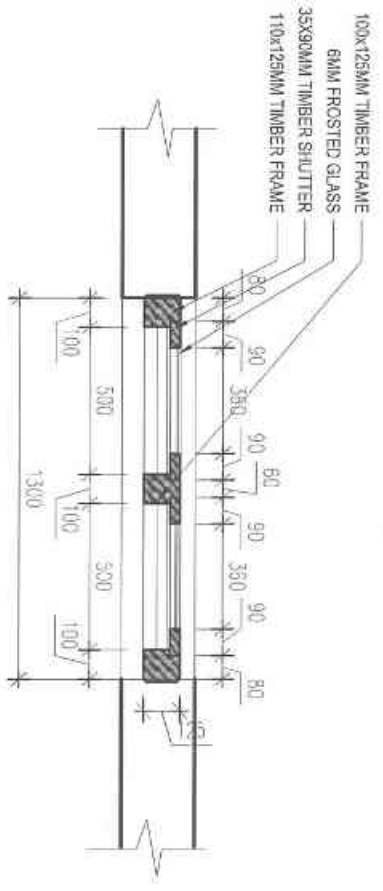
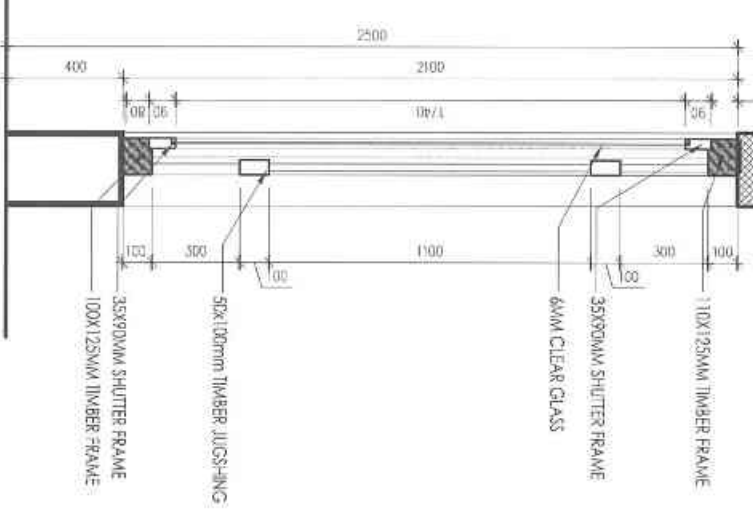
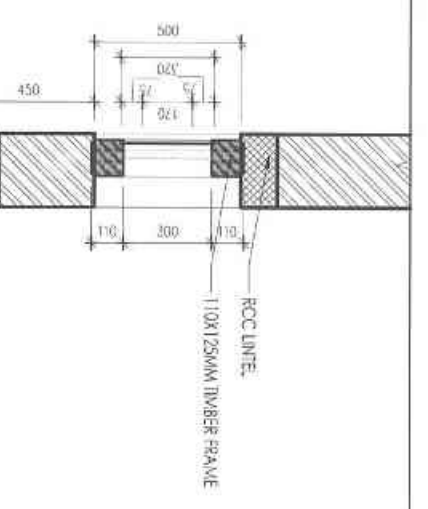
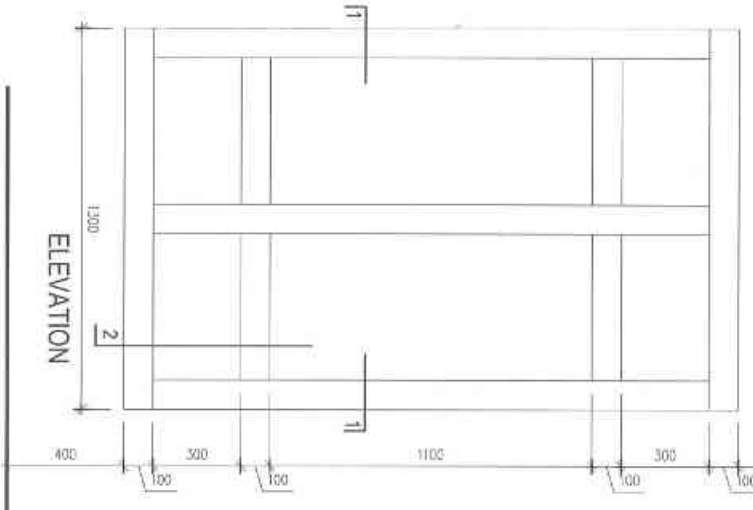
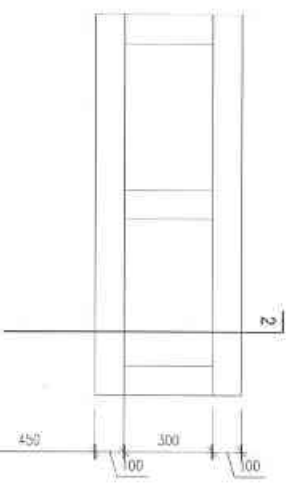
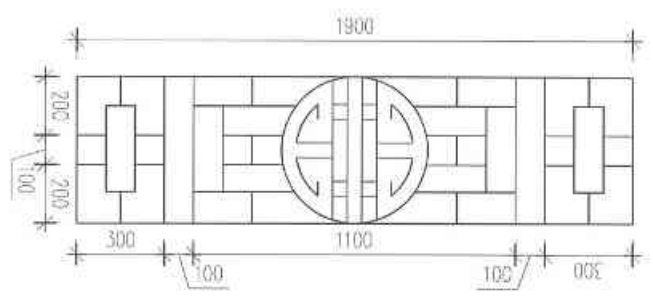
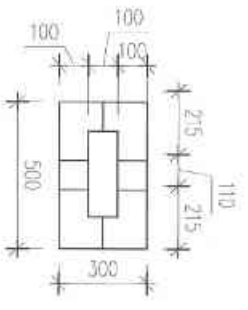
G.M.(DPS): [Signature]

CEO (NHDCI): [Signature]

- NOTES:**
- All dimensions are in millimeters
 - Do not measure from the drawing.
 - Report any discrepancies to the Architect.
 - Contractors or site engineers to verify all dimensions on drawings and on site before commencing any work.

REVISION:	DATE:	REMARKS:

National Housing Development Corporation Ltd.
 Design & Planning Services,
 PO Box 1439
 Thimphu
 Tel # (PABX) 0875-3-33147/33324/33239,
 Fax: 331031, Website: www.nhdc.lk



12 WINDOW [W-2G]

SCALE 1:20

LEGEND

	BRICK WALL
	RCC
	STONE
	PCC
	EARTH
	TIMBER

WINDOW - W-1	
OUTSIDE	INSIDE
MATERIAL	LOCAL MC FAR WINDOW FRAMES AND MS FLAT FOR GRILLS
FINISHING	TRADITIONAL PAINTINGS
HARDWARE	CLEAR LAQUER POLISH
NOTES	2 NOS. STAINLESS STEEL HINGES, 1 NOS. SS TOWER BOLT, 1 NOS. HANDLES, SCREW

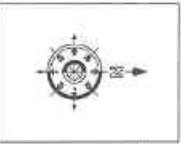
PROJECT: SERVICE CENTER REMODELING

SCALE:	1:20	DRAWING TITLE:	WINDOWS
DATE:	MARCH-2022	DWG. NO.:	AR-021

ARCHITECT
Pushpoot Divyal

GM(DPS)

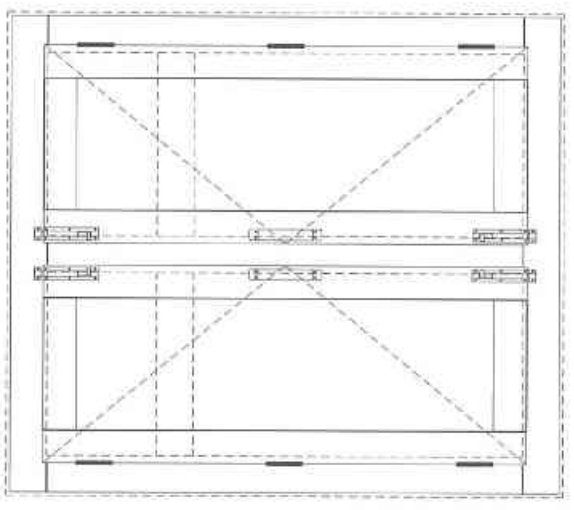
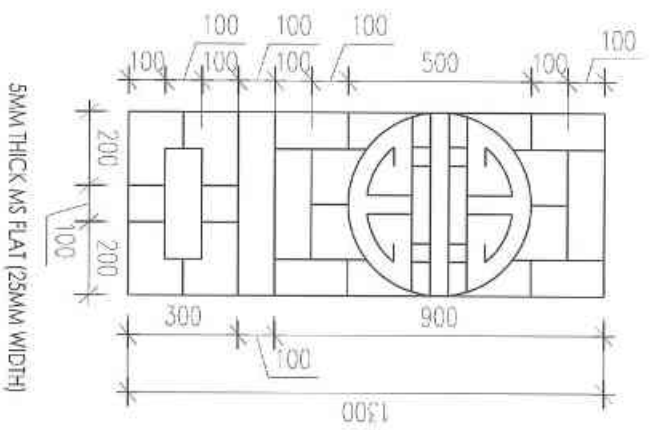
CEO (NHDCU)



- NOTES:**
- All dimensions are in millimeters
 - Do not measure from the drawing.
 - Report any discrepancies to the Architect.
 - Contractors or site engineers to verify all dimensions on drawings and on site before commencing any work.

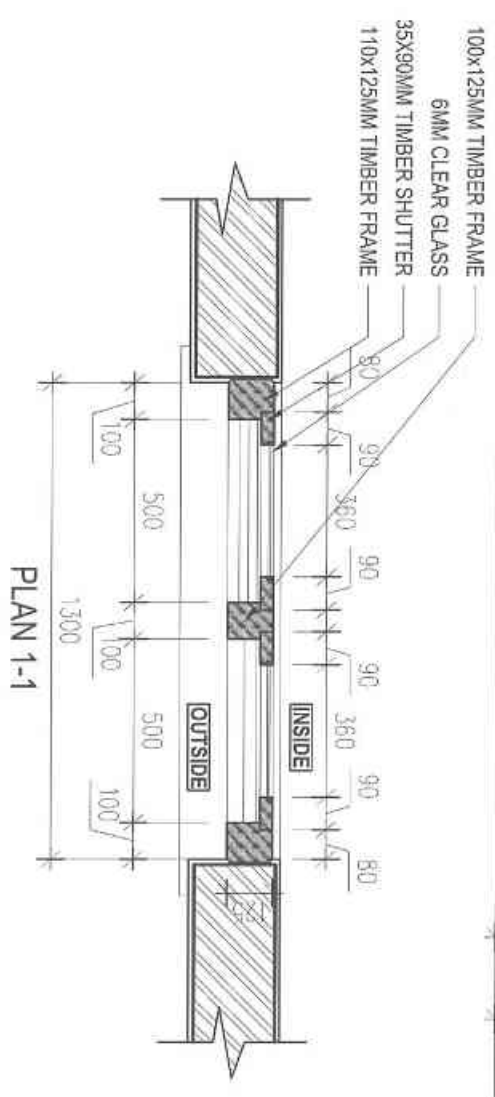
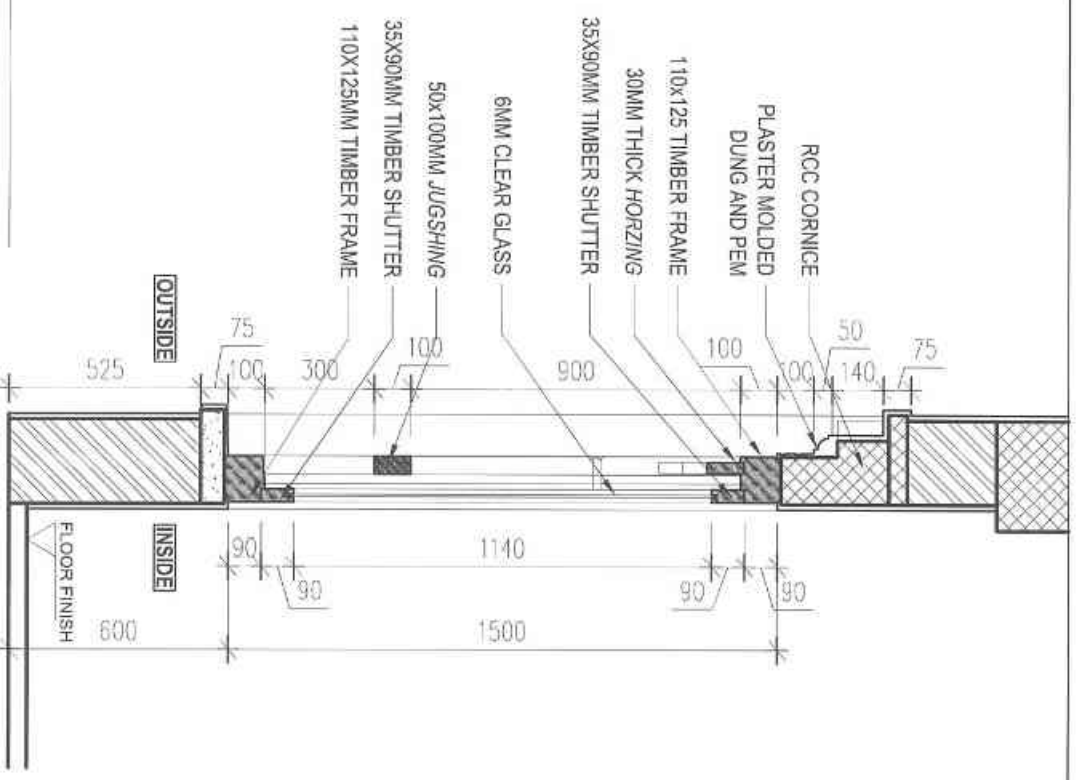
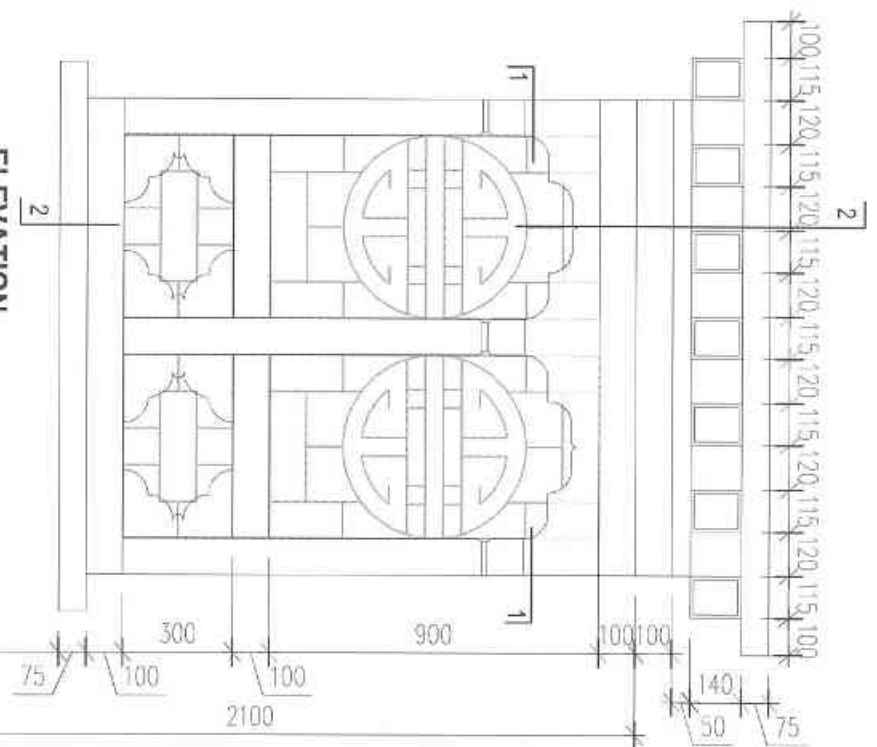
REVISION:	DATE:	REMARKS:

National Housing Development Corporation Ltd.
 Design & Planning Services
 PO Box 1439
 Thimphu
 Tel # (9753) 0975-0, 23147/733234, 332735)
 Fax: 33720 Website: www.nhdcltd



INTERIOR ELEVATION

ELEVATION



WINDOW - W3K

WINDOW - W3K	
OUTSIDE	INSIDE
MATERIAL	LOCAL MC FOR WINDOW FRAMES AND MS FLAT FOR GRILLS
FINISHING	TRADITIONAL PAINTINGS
HARDWARE	CLEAR LACQUER POLISH
NOTES	<ol style="list-style-type: none"> GRILLS TO BE PROVIDED ONLY FOR WINDOWS ON THE GROUND FLOOR WINDOW SHUTTERS TO BE FIRED AFTER PROPER POLISHING

- LEGEND**
- BRICK WALL
 - RCC
 - STONE
 - PCC
 - EARTH
 - TIMBER

PROJECT: SERVICE CENTER REMODELING

SCALE:	1:20	DRAWING TITLE:	WINDOWS
DATE:	MARCH-2022	DWG. NO.:	AR-022

ARCHITECT
Pushpout Divoif

GM(DPS)

CEO/HHDCU



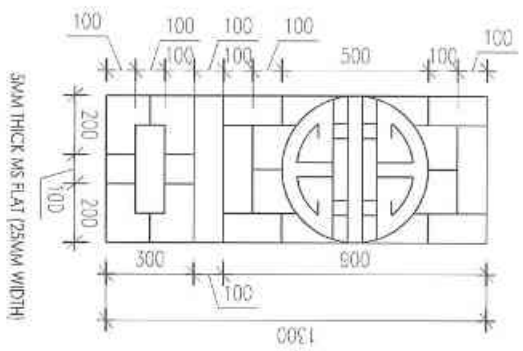
- NOTES:**
- All dimensions are in millimeters
 - Do not measure from the drawing.
 - Report any discrepancies to the Architect.
 - Contractors or site engineers to verify all dimensions on drawings and on site before commencing any work.

REVISION:	DATE:	REMARKS:

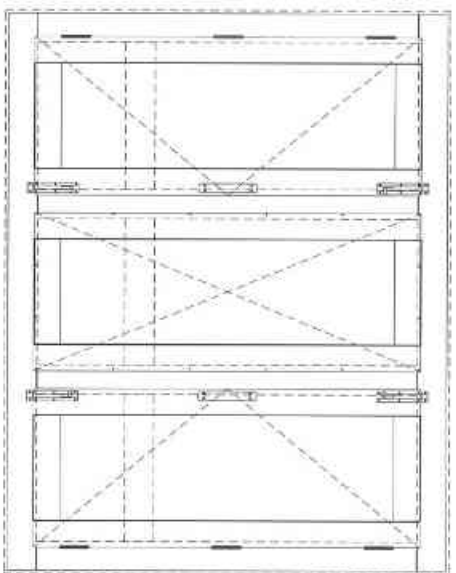


National Housing Development Corporation Ltd.
Design & Planning Services,
PO Box 1439
Thimphu
Tel: # (9753) 10975-2, 323147/332324/322325.
Fax: 332702 Website: www.nhdc.lk

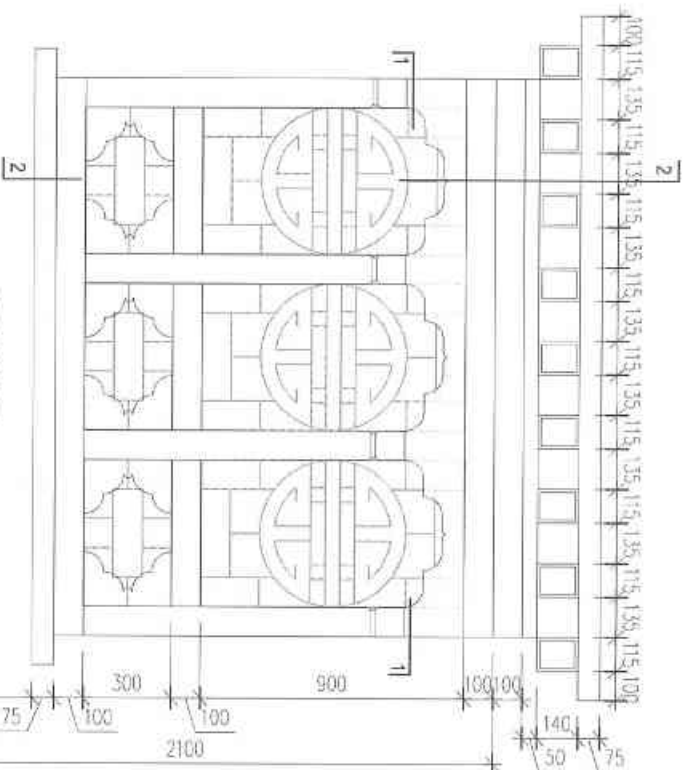
13 WINDOW [W-2P]
SCALE 1:20



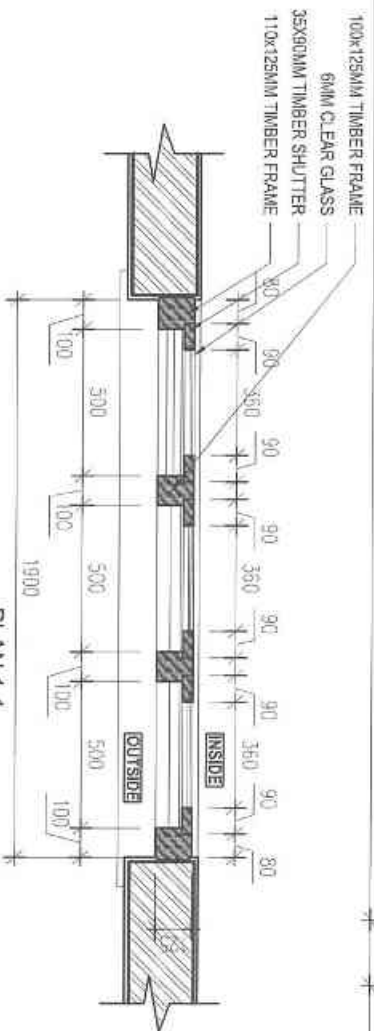
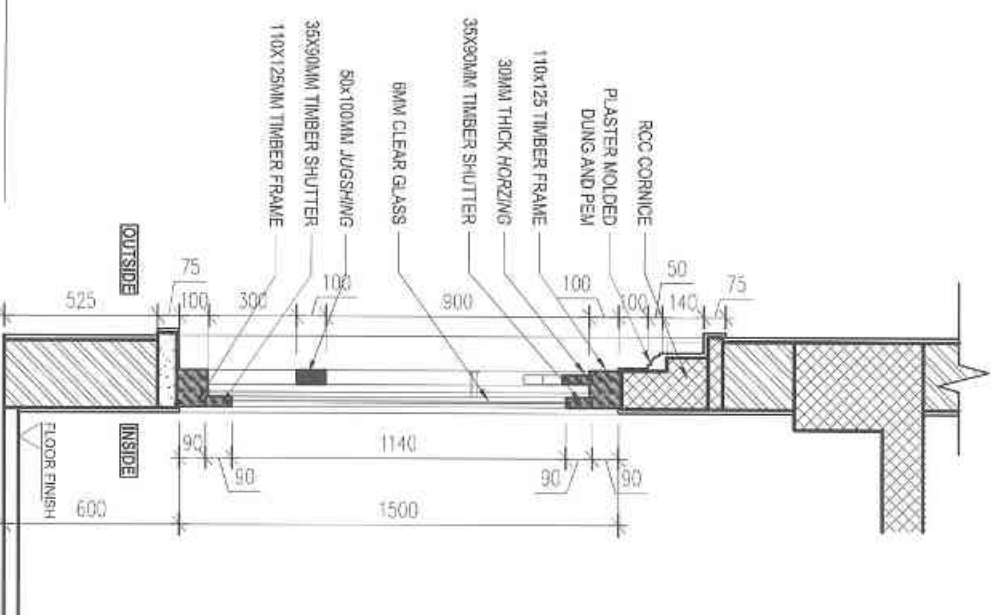
INTERIOR ELEVATION



ELEVATION



SECTION 2-2



PLAN 1-1

15 WINDOW [W-3]

SCALE 1:20

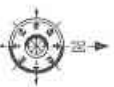
WINDOW- W3	
OUTSIDE	INSIDE
MATERIAL	LOCAL MC FOR WINDOW FRAMES AND MS FLAT FOR GRILLS
FINISHING	TRADITIONAL PAINTINGS
HARDWARE	CLEAR LACQUER POLISH
NOTES	6 NOS. STAINLESS STEEL HINGES, 4 NOS. SS TOWER BOLT, 2 NOS. HANDLES, SCREW
	1. WINDOW SHUTTERS TO BE FIXED AFTER PROPER POLISHING
	1. GRILLS TO BE PROVIDED ONLY FOR WINDOWS ON THE GROUND FLOOR

- LEGEND**
- BRICK WALL
 - RCC
 - STONE
 - PCC
 - EARTH
 - TIMBER

PROJECT: SERVICE CENTER REMODELING

SCALE:	1:20	DRAWING TITLE:	WINDOWS
DATE:	MARCH-2022	DWG. NO.:	AR-024

ARCHITECT		G.M.(DPS)	CEO(INHDCI)
	Pushpoff Divdi		

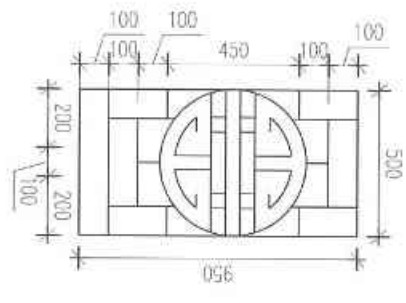


- NOTES:**
- All dimensions are in millimeters.
 - Do not measure from the drawing.
 - Report any discrepancies to the Architect.
 - Contractor or site engineers to verify all dimensions on drawings and on site before commencing any work.

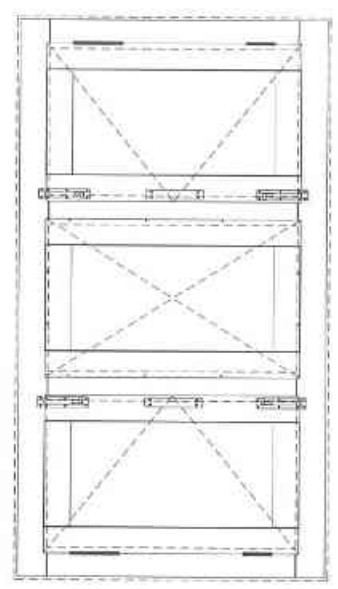
REVISION: DATE: REMARKS:



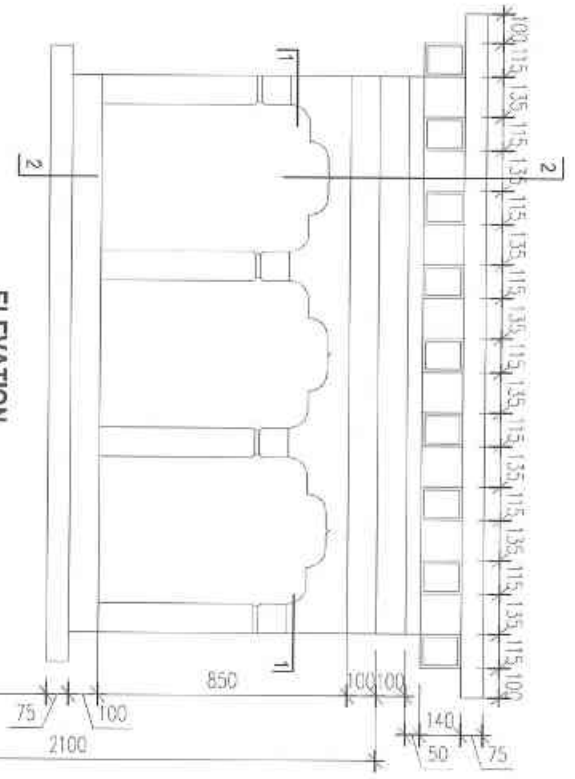
National Housing Development Corporation Ltd.
 Design & Planning Services,
 PO Box 1439
 Thiruphu
 Tel # (044) 2323-2, 3234/7, 3234/3, 3234/5
 Fax: 3232/3, 3232/4, 3232/5
 www.nhdc.ltd



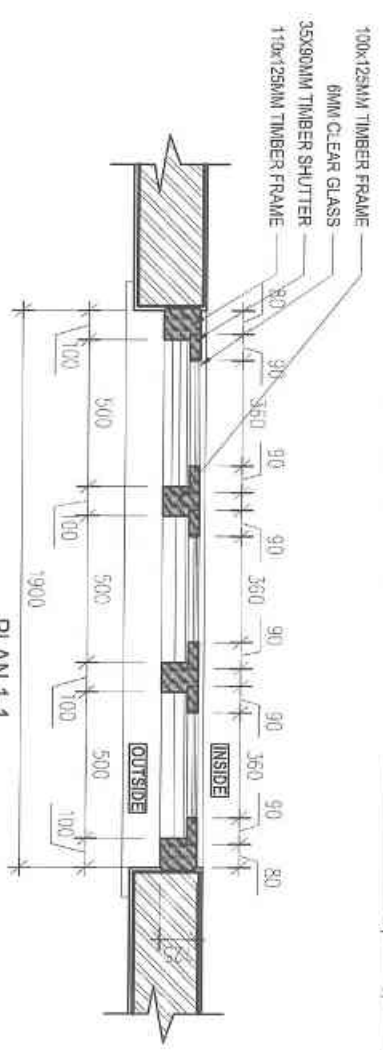
5MM THICK MS FLAT (25MM WIDTH)



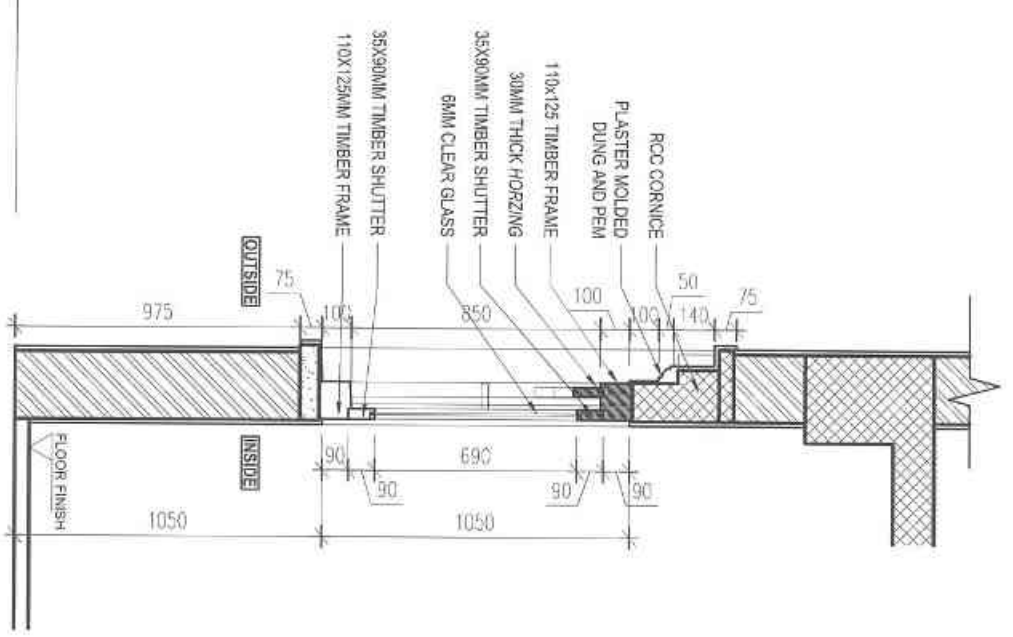
INTERIOR ELEVATION



ELEVATION



PLAN 1-1



SECTION 2-2

WINDOW-W3K	
MATERIAL	LOCAL MS FOR WINDOW FRAMES AND MS FLAT FOR GRILLS
FINISHING	TRADITIONAL PAINTINGS
HARDWARE	8 NOS. STAINLESS STEEL HINGES, 4 NOS. SS TOWER BOLT, 2 NOS. HANDLES, SCREW
NOTES	1. GRILLS TO BE PROVIDED ONLY FOR WINDOWS ON THE GROUND FLOOR

- LEGEND**
- BRICK WALL
 - RCC
 - STONE
 - PCC
 - EARTH
 - TIMBER

PROJECT: SERVICE CENTER REMODELING

SCALE:	1:20	DRAWING TITLE:	WINDOWS
DATE:	MARCH-2022	DWG. NO.:	AR-025

ARCHITECT: Poshupati Divall

GM(DPS): [Signature]

CEO(NHDCI): [Signature]

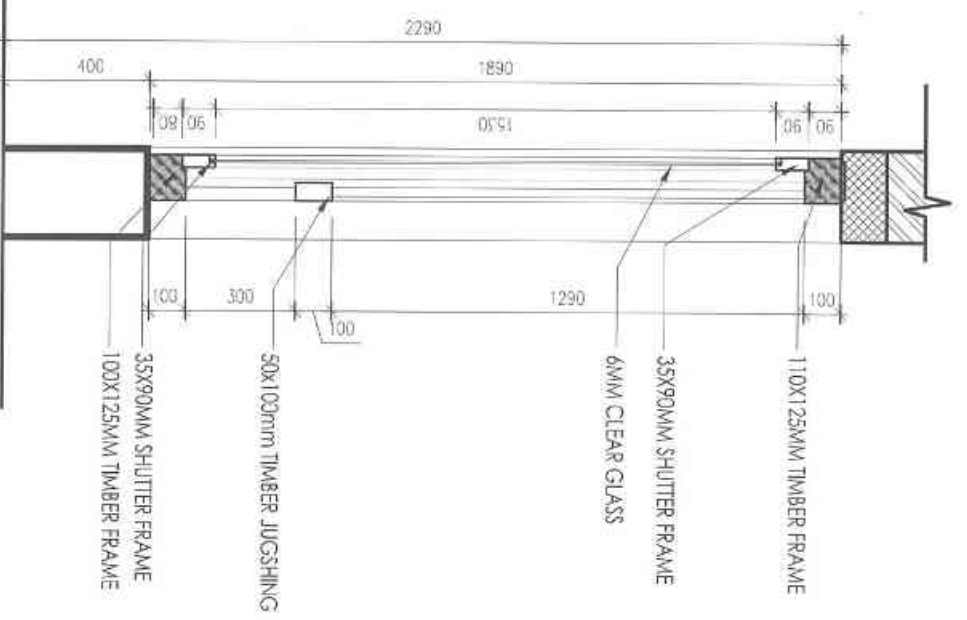
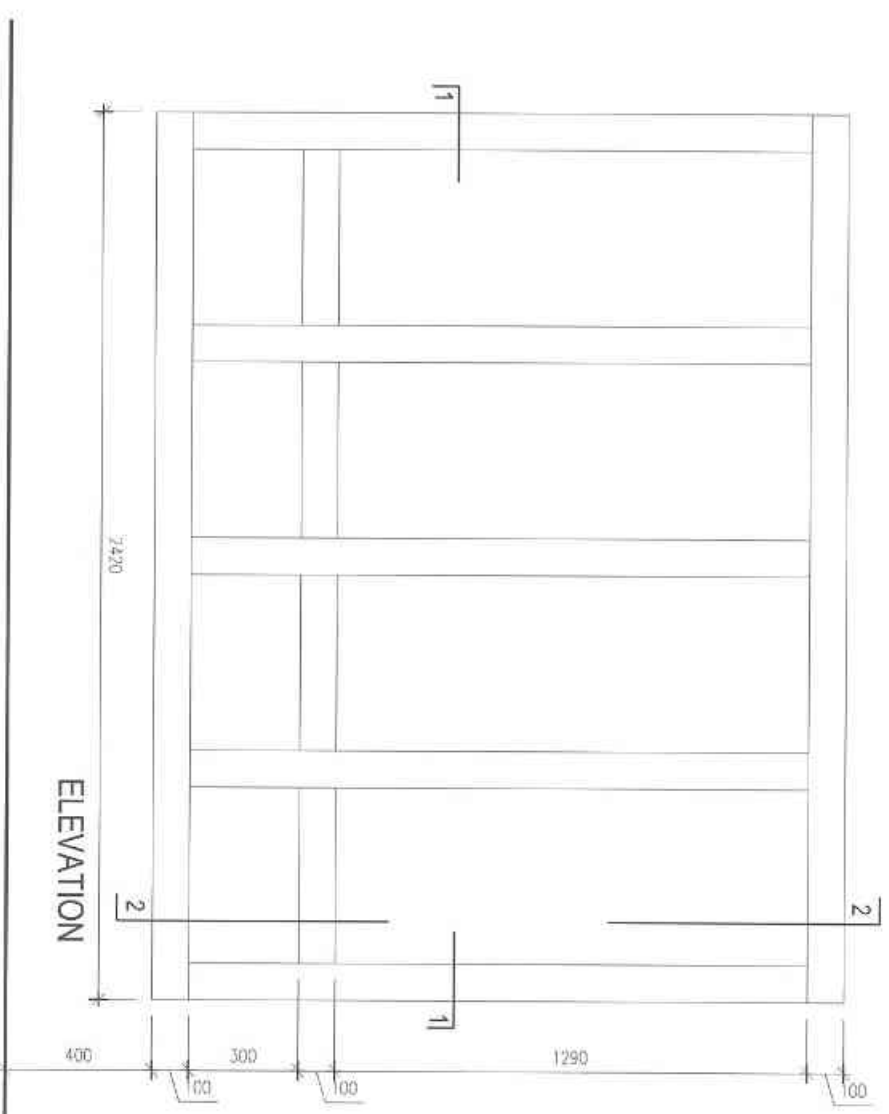
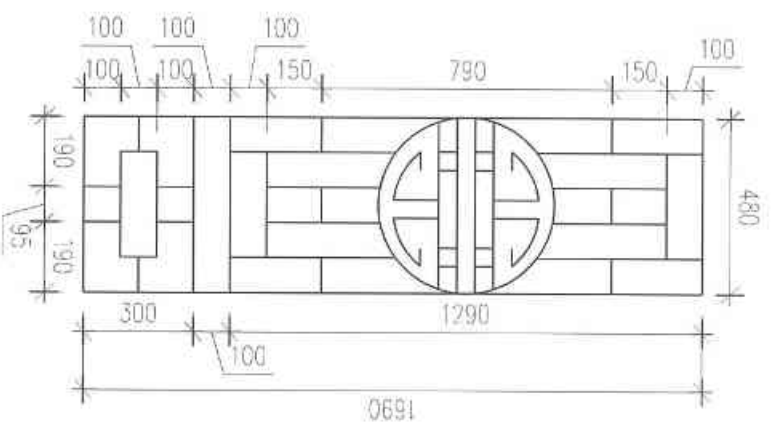
- NOTES:**
- All dimensions are in millimeters
 - Do not measure from the drawing.
 - Report any discrepancies to the Architect.
 - Contractors or site engineers to verify all dimensions on drawings once on site before commencing any work.

REVISION:	DATE:	REMARKS:

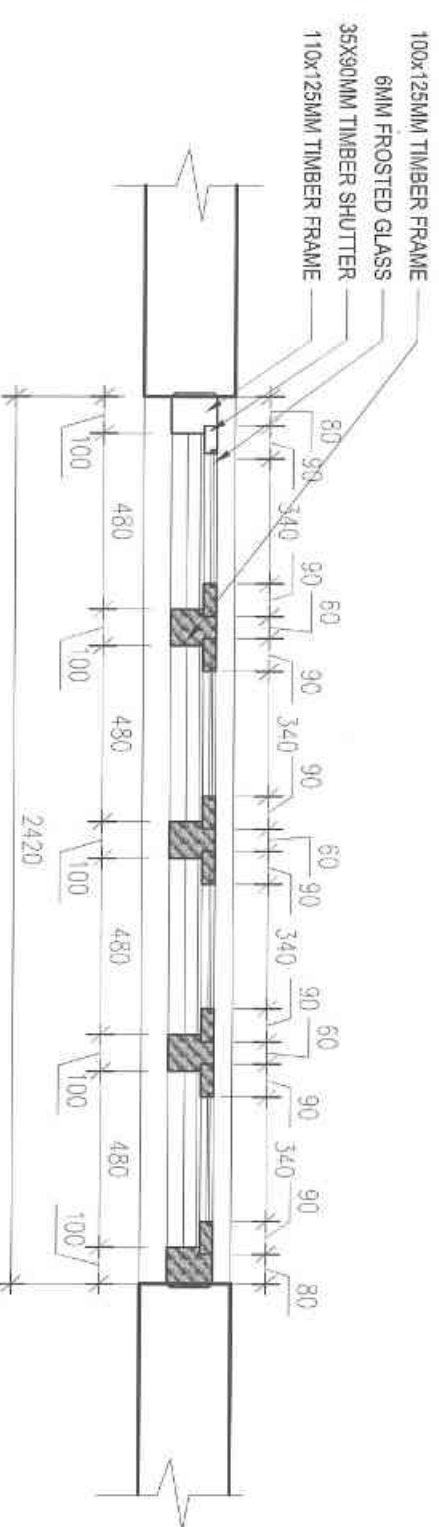
National Housing Development Corporation Ltd.
 Design & Planning Services
 PO Box 1439
 Thimphu
 Tel # (+975) 0975-2-523147 / 332724 / 332725
 Fax: 331703 / Website: www.nhdc.lk

16 WINDOW [W-3K]

SCALE 1:20



SECTION 2-2



17 WINDOW [W-4]

SCALE 1:20

LEGEND

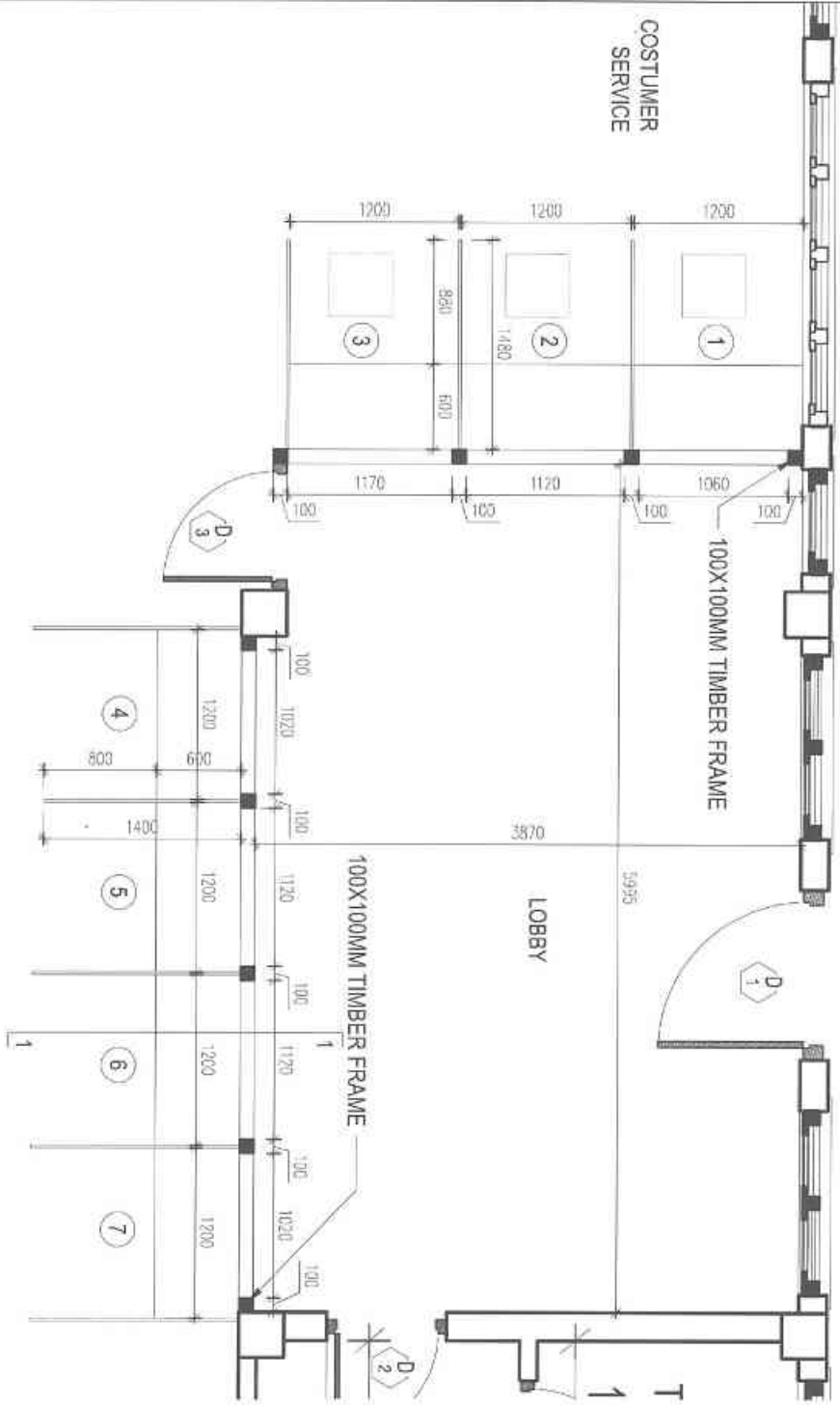
	BRICK WALL
	RCC
	STONE
	PCC
	EARTH
	TIMBER

WINDOW - W-1	
MATERIAL	LOCAL MC FOR WINDOW FRAMES AND MS FLAT FOR GRILLS
FINISHING	TRADITIONAL PAINTINGS
HARDWARE	CLEAR LACQUER POLISH
NOTES	1. WINDOW SHUTTERS TO BE FIXED AFTER PROPER POLISHING 2 NOS. STAINLESS STEEL HINGES, 1 NOS. SS TOWER BOL.T, 1 NOS. HANDLES, SCREW
OUTSIDE	INSIDE

PROJECT: SERVICE CENTER REMODELING

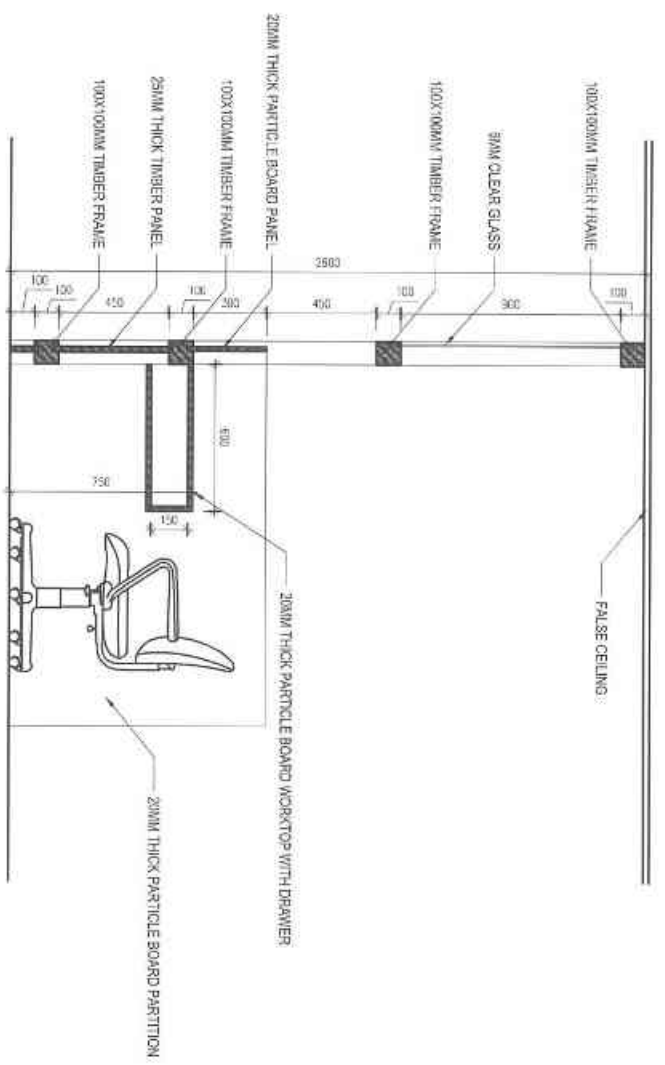
SCALE: 1:20	DRAWING TITLE: WINDOWS	DWG. NO. AR-026	ARCHITECT: Poshupdit Divyaji	GM(DPS):	CEO(NHDCI):	NOTES:	REVISION:	DATE:	REMARKS:
DATE: MARCH-2022						1. All dimensions are in millimeters 2. Do not measure from the drawing. 3. Report any discrepancies to the Architect. 4. Contractors or site engineers to verify all dimensions on drawings and on site before commencing any work.			

National Housing Development Corporation Ltd.
 Design & Planning Services,
 PO Box 1439
 Thimphu
 Tel: (9753) 09753, 2, 323147 / 323151 / 323159,
 Fax: 323170, Website: www.nhdc.la

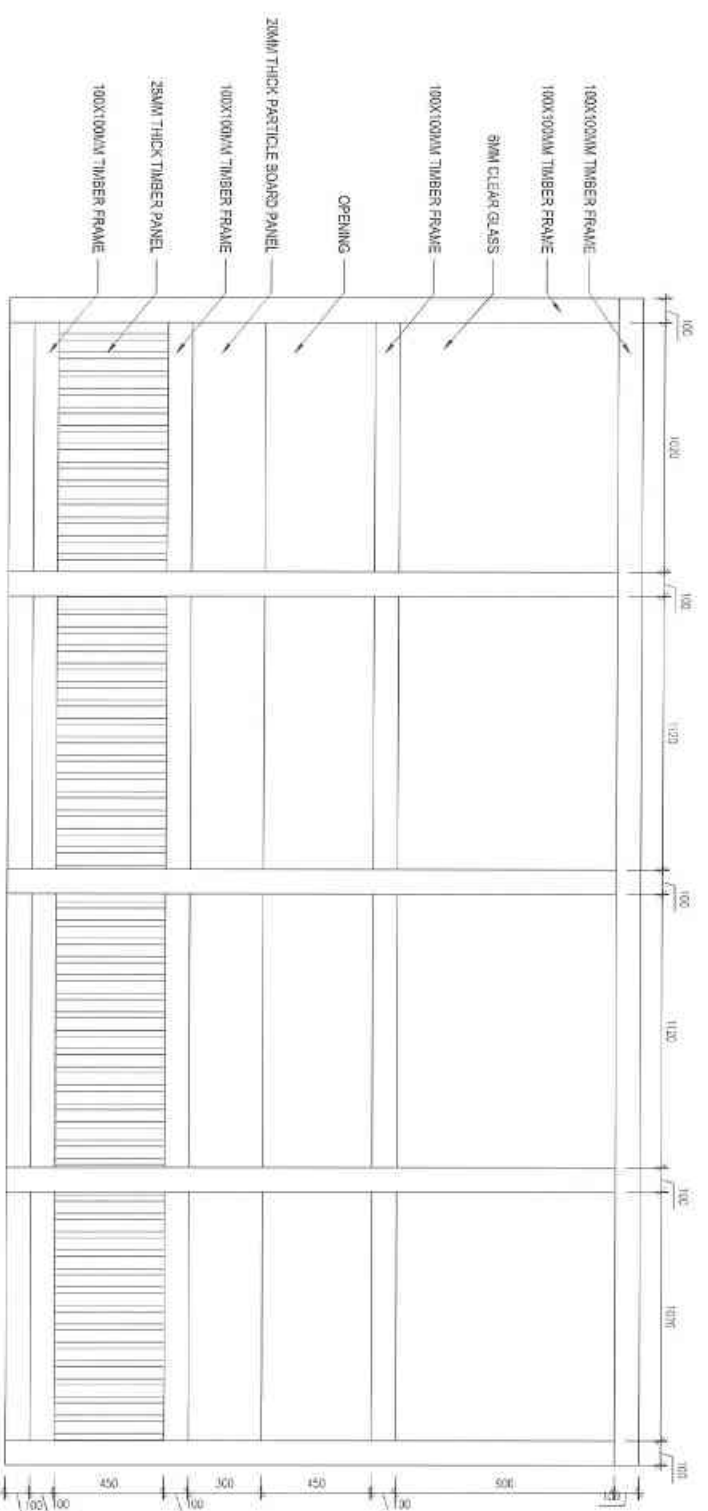


18 SERVICE COUNTER DETAILS
SCALE: 1:50

- LEGEND**
- BRICK WALL
 - RCC
 - STONE
 - PCC
 - EARTH
 - TIMBER



SECTION 1-1



ELEVATION

PROJECT: SERVICE CENTER REMODELING

SCALE:	1:20	DRAWING TITLE:	SERVICE COUNTER DETAILS
DATE:	MARCH-2022	DWG. NO.:	AR-027

ARCHITECT		GM/DP(S)	
Posthupoi Divoil		CEO/HHDCU	



- NOTES:**
1. All dimensions are in millimeters.
 2. Do not measure from the drawing.
 3. Report any discrepancies to the Architect.
 4. Contractors or site engineers to verify all dimensions on drawings and on site before commencing any work.

REVISION:	DATE:	REMARKS:

National Housing Development Corporation Ltd.
Design & Planning Services,
PO Box 1439
Thimphu
Tel: # (9753) 33147/33273/33273
Fax: 3312031 Website: www.nhdcltd.lk